

PARTS LIST

for **JACOBSEN[®]** **ELECTRIC RIDING ROTARY MOWER**

34" ELECTRA MARK IV NO. 43040
SERIAL NO. 1601 AND UP

SEE YOUR JACOBSEN SERVICE DEALER

This manual is an operating and service guide for the owner. We recommend that you read it carefully before operating your mower and that you follow the simple adjustments and maintenance listed. We do not recommend that you make major repairs beyond necessary adjustments and simple parts replacements required to keep your unit in good operating condition.

For assistance in getting the most out of your unit, and for overhaul, winter or summer storage, tune-up, and repair service, we recommend your Authorized Jacobsen Dealer, who is prepared to help you.

HOW TO ORDER REPAIR PARTS

To eliminate error and speed delivery:

1. Write your NAME and ADDRESS on your order plainly.
2. Explain WHERE and HOW to make shipment.
3. Give PRODUCT NUMBER, NAME, and SERIAL NUMBER that is stamped on the NAME PLATE or SERIAL PLATE of your product.
4. Order by QUANTITY DESIRED, the PART NUMBER, and the DESCRIPTION OF PART.

5. Send your order to or visit your nearest JACOBSEN DEALER, AUTHORIZED SERVICE STATION, or AUTHORIZED JACOBSEN SERVICE DISTRIBUTOR as indicated in your SERVICE STATION DISTRIBUTOR'S DIRECTORY.
6. INSPECT ALL SHIPMENTS ON RECEIPT. If any parts are damaged or missing, file a claim with the carrier before accepting.
7. Do not return material to your nearest JACOBSEN DEALER, AUTHORIZED SERVICE STATION, or AUTHORIZED JACOBSEN SERVICE DISTRIBUTOR without a letter of explanation. Make a list of all returned parts, show your name and address, and include it with the shipment. TRANSPORTATION CHARGES MUST BE PREPAID.

JACOBSEN MANUFACTURING COMPANY PERFORMANCE GUARANTY - CONSUMER PRODUCTS

Jacobsen Manufacturing Company (hereinafter Jacobsen) guarantees to the original retail purchaser of new and unused Jacobsen Consumer products that the same are free from defects in workmanship or materials that may cause performance failure subject to the conditions hereinafter stated:

This guaranty is limited to a period of one year. It is further limited to a period of 45 days if the product is used for commercial or rental purposes. Both periods are from the date of purchase. Replacement of any defective part including labor free of charge, f.o.b. any Authorized Jacobsen Service Station,

shall constitute compliance by Jacobsen with this guaranty.

This guaranty does not apply to the power pack (motors, batteries, charger, etc.) or other parts that are manufactured and guaranteed by the manufacturer thereof; nor does it apply with respect to any product or part (1) that has been repaired other than by an Authorized Jacobsen Service Station, or (2) that has had original parts removed or otherwise altered without specific authorization beforehand by Jacobsen or (3) that has had placed upon or attached

to it any part or product not sold or approved by Jacobsen or (4) that has been damaged or improperly used, or not used in conformity with the applicable Jacobsen Owner's Manual for that product or (5) that has not been properly adjusted, lubricated or maintained by the user.

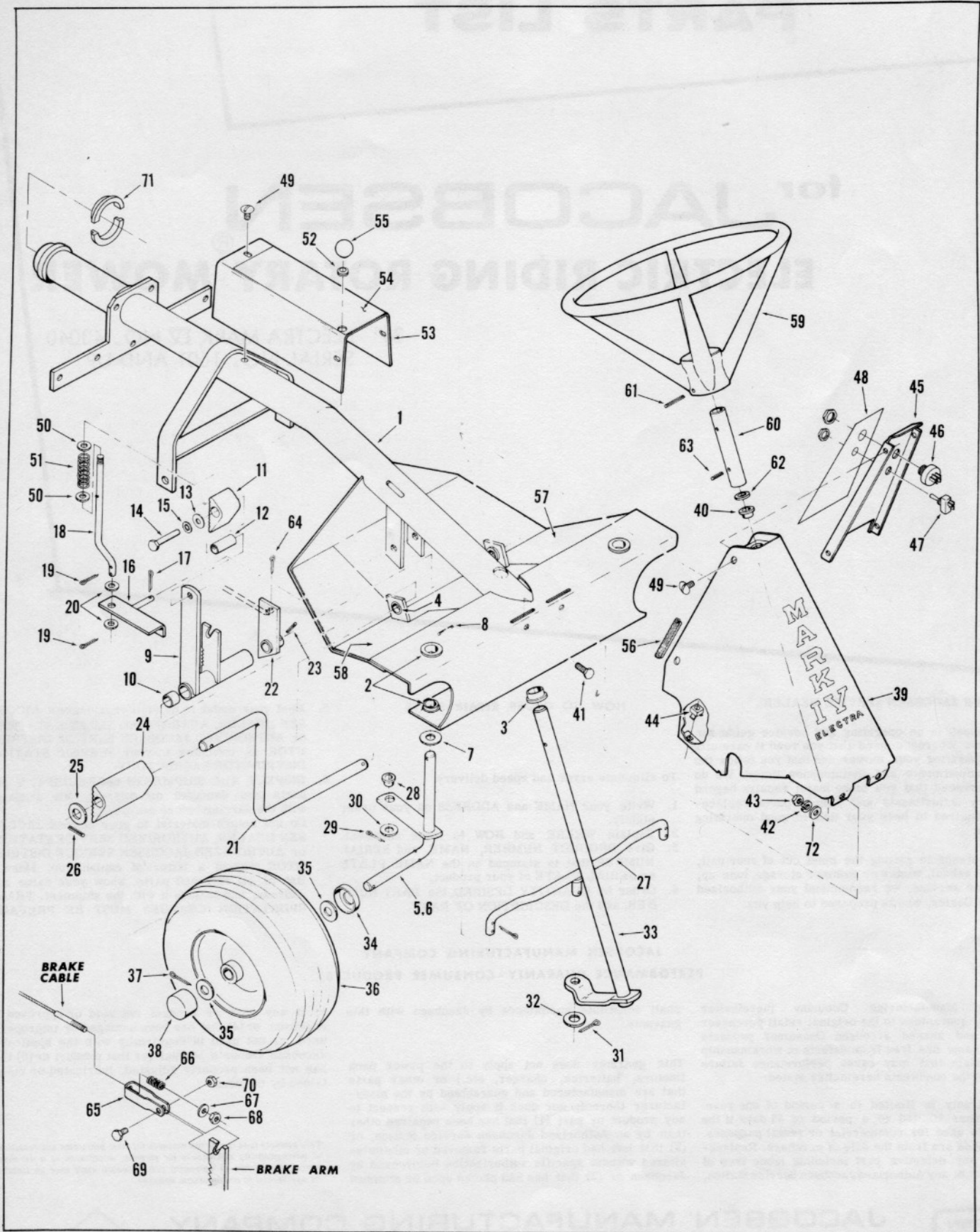
This guaranty is in lieu of and excludes all other guaranties and conditions of merchantability and fitness for purpose. Acceptance of a Jacobsen product constitutes an agreement that Jacobsen shall have no liability for any special or consequential damages.



JACOBSEN MANUFACTURING COMPANY
A Member Company of Allegheny Ludlum Industries
RACINE, WISCONSIN 53403



FRONT FRAME ASSEMBLY - ILLUSTRATION 1



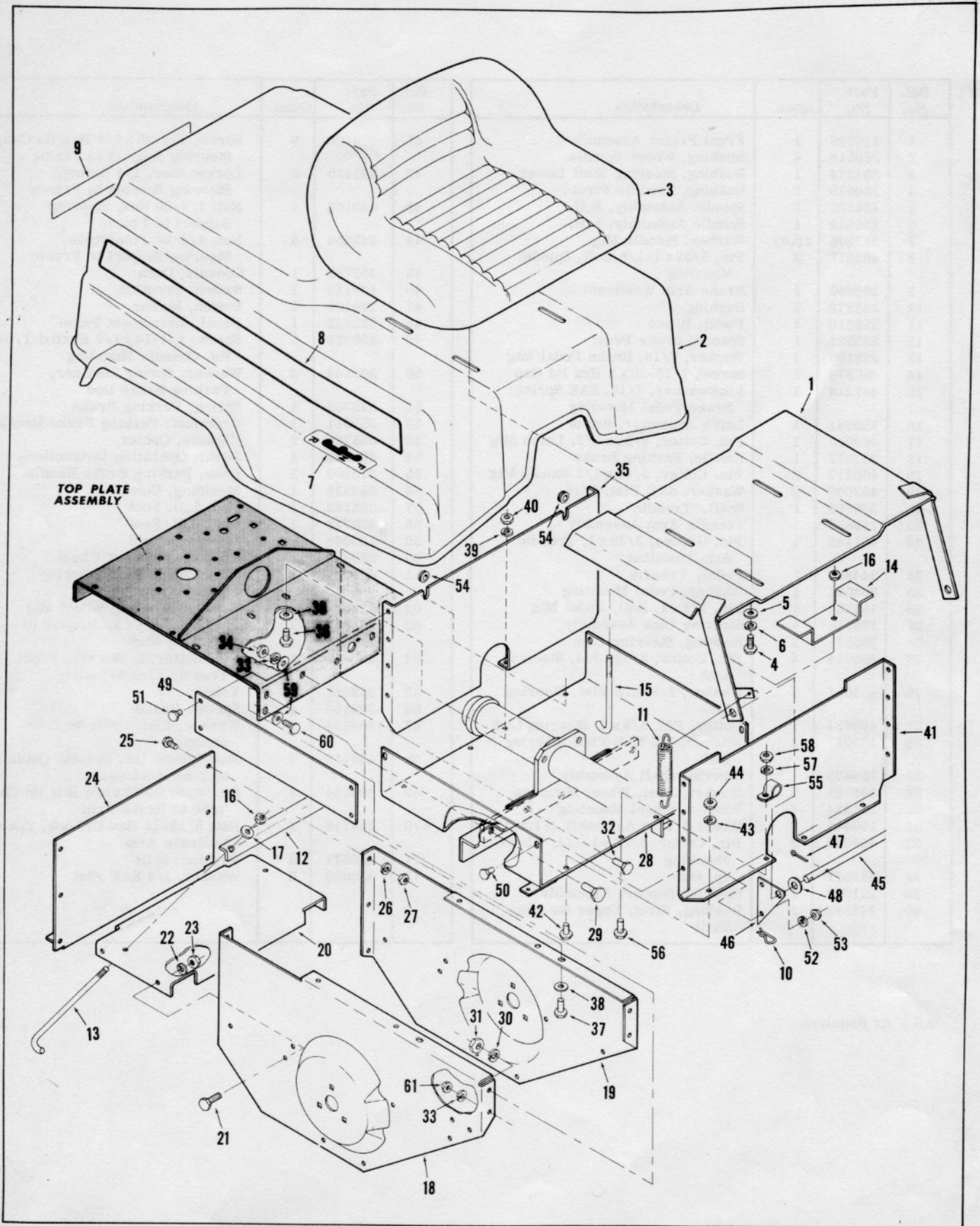
PARTS LIST - ILLUSTRATION 1

Ref. No.	Part No.	Quan.	Description
1	116326	1	Front Frame Assembly
2	350518	4	Bushing, Wheel Spindle
3	351674	1	Bushing, Steering Shaft Lower
4	350519	2	Bushing, Treadle Pivot
5	156920	1	Spindle Assembly, R.H.
6	156919	1	Spindle Assembly, L.H.
7	312306	2 (AR)	Washer, Spindle Mtg
8	461377	2	Pin, 5/32 x 1-1/8 Roll, Spindle Mounting
9	159860	1	Brake Arm Weldment
10	348872	2	Bushing
11	353316	1	Pedal, Brake
12	353529	1	Spacer, Brake Pedal
13	328190	1	Washer, 7/16, Brake Pedal Mtg
14	400378	1	Screw, 7/16-20 x 2 Hex Hd Cap
15	447218	1	Lockwasher, 7/16, SAE Spring, Brake Pedal Mounting
16	159861	1	Latch Assembly, Brake
17	460010	1	Pin, Cotter, 3/32 x 1/2, Latch Mtg
18	353572	1	Handle, Parking Brake
19	460010	2	Pin, Cotter, 3/32 x 1/2 Handle Mtg
20	453009	2	Washer, SAE Flat, 5/16
21	335779	1	Shaft, Treadle
22	159859	1	Treadle Arm Assembly
23	461185	1	Pin, Groove, 3/16 x 1, Treadle Arm Mounting
24	344895	1	Pedal, Treadle
25	308611	1	Washer, Pedal Mounting
26	461363	1	Pin, 1/8 x 1, Roll, Pedal Mtg
27	156918	1	Steering Link Assembly
28	350521	2	Bushing, Steering Link
29	460014	4	Pin, Cotter, 3/32 x 3/4, Steering Link
30	453011	2	Washer, 3/8 SAE Flat, Steering Link
31	460028	1	Cotter, Pin, 1/8 x 1, Steering Link
32	453017	1	Washer, 1/2 SAE Flat, Steering Link
33	159639	1	Steering Shaft Assembly
34	348881	2	Washer, Dust, Wheel Mounting
35	351334	4	Washer, Wheel Mounting
36	120446	2	Wheel & Tire Assembly (Front)
37	460040	2	Pin, Cotter, 5/32 x 1-1/4, Wheel Mounting
38	348877	2	Cap, Hub
39	121689	1	Steering Support Assembly
40	348883	1	Bushing, Pivot, Upper Steering Shaft

Ref. No.	Part No.	Quan.	Description
41	400108	6	Screw, 1/4-20 x 3/4 Hex Hd Cap, Steering Support to Frame
42	446130	6	Lockwasher, 1/4 Spring, Steering Support to Frame
43	443102	2	Nut, 1/4-20 Hex, Steering Support to Frame
44	445254	4	Nut, 1/4-20 Tinnerman, Steering Support to Frame
45	335788	1	Console, Dash
46	130110	1	Switch, Traction
47	130109	1	Switch, Mower
48	335823	1	Decal, Instrument Panel
49	409259	5	Screw, 1/4-14 x 1/2 Slotted Truss Hd, Console Mounting
50	308144	2	Washer, Spring Retainer, Parking Brake Rod
51	315344	1	Spring, Parking Brake
52	352011	1	Grommet, Parking Brake Handle
53	335781	1	Console, Center
54	335824	1	Decal, Operating Instructions
55	315209	1	Knob, Parking Brake Handle
56	353539	1	Moulding, Console
57	335163	1	Pad, L.H. Foot
58	335778	1	Pad, R.H. Foot
59	130062	1	Steering Wheel
60	353319	1	Adapter, Steering Wheel
61	461393	1	Pin, Roll, 1/4 x 2, Steering Wheel Mounting
62	326925	1	Washer, Steering Wheel Mtg
63	461387	1	Pin, Roll, 1/4 x 1, Adapter to Steering Shaft
64	460010	1	Pin, Cotter, 3/32 x 1/2, Front Treadle Link Mounting
65	353581	1	Yoke
66	309506	1	Spring, Brake
67	304804	1	Washer, Flat, Cable to Yoke Anchor
68	445712	1	Nut, 1/4-20 Hex Nylock, Cable to Yoke Anchor
69	400184	1	Screw, 5/16-18 x 3/4 Hex Hd Cap, Yoke to Brake Arm
70	444718	1	Nut, 5/16-18 Hex C/Lock, Yoke to Brake Arm
71	350511	4	Bushing, Split
72	453023	6	Washer, 1/4 SAE Flat

AR - As Required

REAR FRAME ASSEMBLY - ILLUSTRATION 2

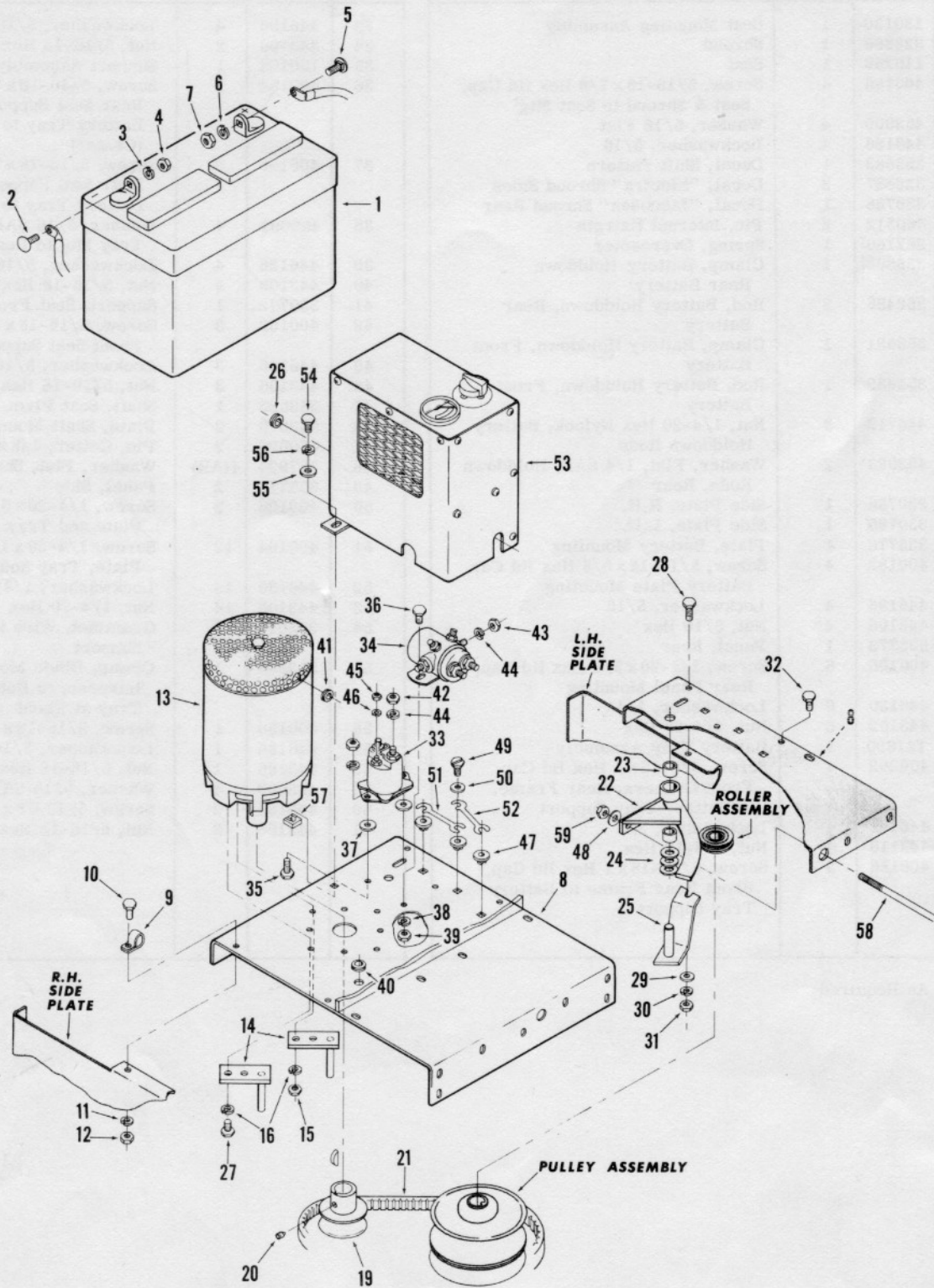


PARTS LIST - ILLUSTRATION 2

Ref. No.	Part No.	Quan.	Description	Ref. No.	Part No.	Quan.	Description
1	130130	1	Seat Mounting Assembly	33	446136	4	Lockwasher, 5/16
2	328886	1	Shroud	34	443106	2	Nut, 5/16-18 Hex
3	116259	1	Seat	35	130108	1	Support Assembly, Seat, Rear
4	400186	4	Screw, 5/16-18 x 7/8 Hex Hd Cap, Seat & Shroud to Seat Mtg	36	400184	2	Screw, 5/16-18 x 3/4 Hex Hd Cap, Rear Seat Support Assembly & Battery Tray to Rear Frame (Center)
5	453009	4	Washer, 5/16 Flat	37	400186	2	Screw, 5/16-18 x 7/8 Hex Hd Cap, Rear Seat Support Assembly & Battery Tray to Rear Frame
6	446136	4	Lockwasher, 5/16	38	453009	4	Washer, 5/16 SAE Flat, Battery Tray Mtg to Rear Frame
7	353683	1	Decal, Shift Pattern	39	446136	4	Lockwasher, 5/16
8	328887	2	Decal, "Electra" Shroud Sides	40	443106	4	Nut, 5/16-18 Hex
9	330788	1	Decal, "Jacobsen" Shroud Rear	41	330772	1	Support, Seat Front
10	460312	2	Pin, Internal Hairpin	42	400182	3	Screw, 5/16-18 x 5/8 Hex Hd Cap, Front Seat Support Mounting
11	352180	1	Spring, Overcenter	43	446136	3	Lockwasher, 5/16
12	335805	1	Clamp, Battery Holddown Rear Battery	44	443106	3	Nut, 5/16-18 Hex
13	352485	2	Rod, Battery Holddown, Rear Battery	45	353583	1	Shaft, Seat Pivot
14	353631	1	Clamp, Battery Holddown, Front Battery	46	353573	2	Plate, Shaft Mounting
15	353639	1	Rod, Battery Holddown, Front Battery	47	460026	2	Pin, Cotter, 1/8 x 3/4, Shaft Mtg
16	445712	3	Nut, 1/4-20 Hex Nylock, Battery Holddown Rods	48	327924	4(AR)	Washer, Flat, Shaft Mounting
17	453023	2	Washer, Flat, 1/4 SAE, Holddown Rods, Rear	49	335775	2	Panel, Side
18	330786	1	Side Plate, R.H.	50	400106	2	Screw, 1/4-20 x 5/8 Hex Hd Cap, Plate and Tray Mounting
19	330785	1	Side Plate, L.H.	51	400104	12	Screw, 1/4-20 x 1/2 Hex Hd Cap, Plate, Tray and Panel Mtg
20	335776	1	Plate, Battery Mounting	52	446130	14	Lockwasher, 1/4
21	400182	4	Screw, 5/16-18 x 5/8 Hex Hd Cap, Battery Plate Mounting	53	443102	14	Nut, 1/4-20 Hex
22	446136	4	Lockwasher, 5/16	54	352011	2	Grommet, Wire thru Rear Seat Support
23	443106	4	Nut, 5/16 Hex	55	353540	1	Clamp, Blade Motor Wire Harness, to Bottom of Battery Tray at Front
24	335773	1	Panel, Rear	56	400184	1	Screw, 5/16-18 x 3/4, Clamp Mtg
25	400106	6	Screw, 1/4-20 x 5/8 Hex Hd Cap, Rear Panel Mounting	57	446186	1	Lockwasher, 5/16, SAE Flat
26	446130	6	Lockwasher, 1/4	58	443106	1	Nut, 5/16-18 Hex
27	443102	6	Nut, 1/4-20 Hex	59	453009	4	Washer, 5/16 SAE Flat
28	121690	1	Battery Tray Assembly	60	400184	2	Screw, 5/16-18 x 3/4 Hex Hd Cap
29	400262	4	Screw, 3/8-16 x 1 Hex Hd Cap, Front Corners, Rear Frame, to Battery Tray Support	61	443106	2	Nut, 5/16-18 Hex
30	446142	4	Lockwasher, 3/8				
31	443110	4	Nut, 3/8-16 Hex				
32	400188	2	Screw, 5/16-18 x 1 Hex Hd Cap, Front Rear Frame to Battery Tray Support				

AR - As Required

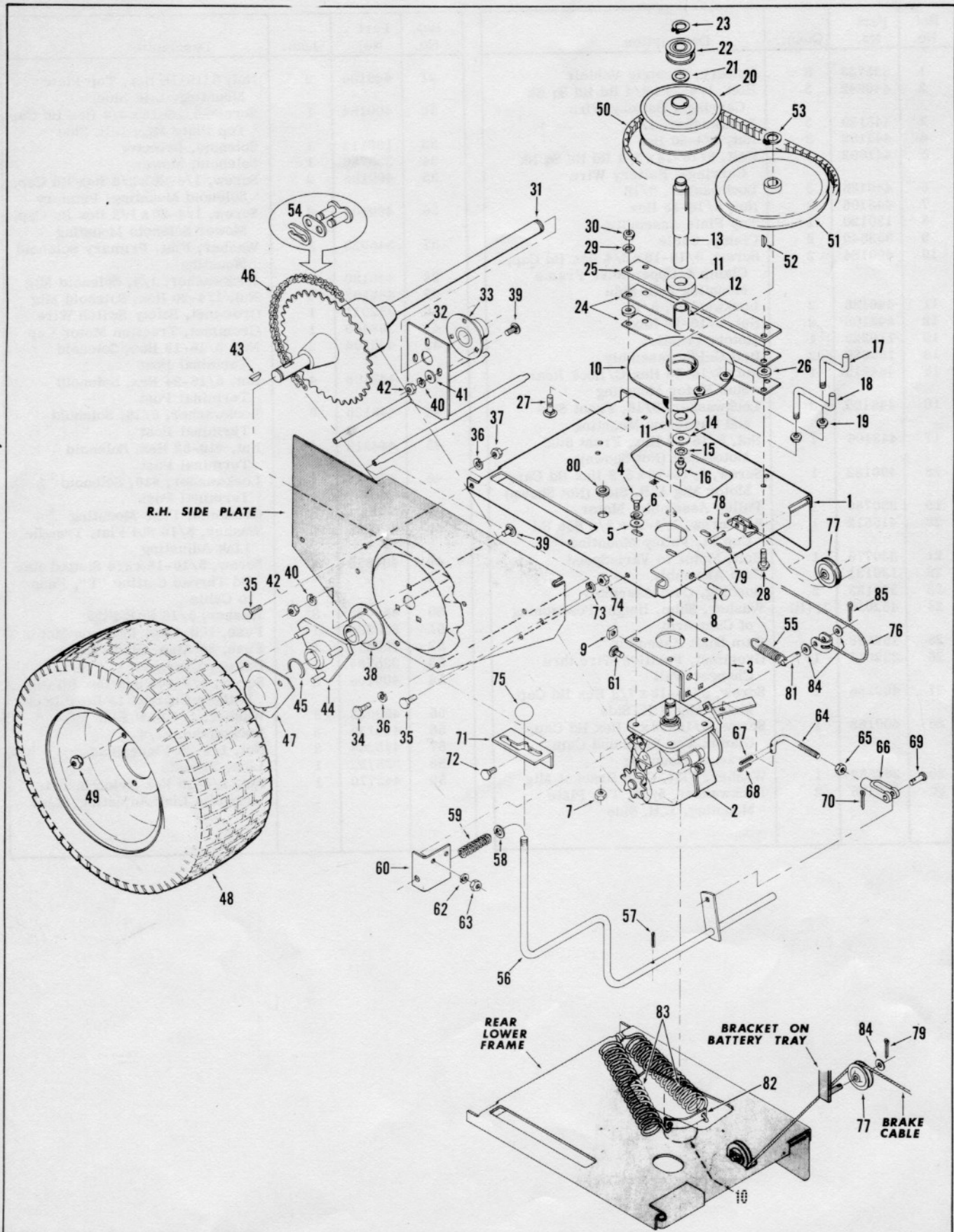
UPPER REAR FRAME ASSEMBLY - ILLUSTRATION 3



PARTS LIST - ILLUSTRATION 3

Ref. No.	Part No.	Quan.	Description	Ref. No.	Part No.	Quan.	Description
1	335783	3	Battery, Electric Vehicle	31	443106	2	Nut, 5/16-18 Hex, Top Plate Mounting, L.H. Side
2	440042	3	Bolt, 1/4-20 x 3/4 Rd Hd Sq Nk Carriage, Battery Wire	32	400184	1	Screw, 5/16-18 x 3/4 Hex Hd Cap, Top Plate Mtg, L.H. Side
3	446130	3	Lockwasher, 1/4	33	130113	1	Solenoid, Primary
4	443102	3	Nut, 1/4-20 Hex	34	335786	1	Solenoid, Mower
5	441602	3	Bolt, 5/16-18 x 3/4 Rd Hd Sq Nk Carriage, Battery Wire	35	400108	2	Screw, 1/4-20 x 3/4 Hex Hd Cap, Solenoid Mounting, Primary
6	446136	3	Lockwasher, 5/16	36	400104	2	Screw, 1/4-20 x 1/2 Hex Hd Cap, Mower Solenoid Mounting
7	443106	3	Nut, 5/16-18 Hex	37	345923	2	Washer, Flat, Primary Solenoid Mounting
8	130120	1	Top Plate Assembly	38	446130	4	Lockwasher, 1/4, Solenoid Mtg
9	353540	2	Clamp, Cable	39	443102	4	Nut, 1/4-20 Hex, Solenoid Mtg
10	400184	2	Screw, 5/16-18 x 3/4 Hex Hd Cap, Clamp & Upper Rear Frame Mounting R.H. Side	40	352011	1	Grommet, Safety Switch Wire
11	446136	2	Lockwasher, 5/16	41	308400	1	Grommet, Traction Motor Cap
12	443106	2	Nut, 5/16-18 Hex	42	443106	2	Nut, 5/16-18 Hex, Solenoid Terminal Post
13	116325	1	Motor, Traction	43	443108	4	Nut, 5/16-24 Hex, Solenoid Terminal Post
14	159889	2	Belt Guide Assembly	44	446136	6	Lockwasher, 5/16, Solenoid Terminal Post
15	444718	1	Nut, 5/16-18 Hex C/Lock Rear Stud Motor Mounting	45	444312	4	Nut, #10-32 Hex, Solenoid Terminal Post
16	446136	3	Lockwasher, 5/16, Front Stud and Capscrew Mounting	46	446118	4	Lockwasher, #10, Solenoid Terminal Post
17	443106	1	Nut, 5/16-18 Hex, Front Stud Motor Mtg (Not Shown)	47	353551	3	Grommet, Fuse Mounting
18	400182	1	Screw, 5/16-18 x 5/8 Hex Hd Cap, Motor Mtg L.H. Side (Not Shown)	48	452006	1	Washer, 5/16 Std Flat, Treadle Link Adjusting
19	330780	1	Pulley Assembly, Motor	49	408858	3	Screw, 5/16-18 x 3/4 Slotted Hex Hd Thread Cutting "T", Fuse to Cable
20	415512	1	Set Screw, 1/4-20 x 3/8 Soc Hd Cup Pt, Pulley Mounting	50	453009	3	Washer, 5/16 SAE Flat
21	330776	1	Belt, Motor to Vari-Speed	51	353538	1	Fuse, 100 Amp, Traction Motor
22	130131	1	Cam Assembly	52	353451	1	Fuse, 80 Amp, Blade Motor
23	328133	2	Bushing, Cam Assembly	53	335784	1	Battery Charger
24	452010	3(AR)	Washer, Shim, Height Positioning of Cam Arm	54	400106	3	Screw, 1/4-20 x 5/8 Hex Hd Cap, Battery Charger to Rear Deck
25	159888	1	Cam Shaft Assembly	55	453023	3	Washer, 1/4 SAE Flat
26	352011	1	Grommet, Positive Wire thru Charger Wall	56	446130	3	Lockwasher, 1/4
27	400186	1	Screw, 5/16-18 x 7/8 Hex Hd Cap, Motor Mtg R.H. Side	57	445264	3	Nut, 1/4-20 Tinnerman
28	400188	1	Screw, 5/16-18 x 1 Hex Hd Cap, Clamp, Top Plate and Cam Bracket Mounting	58	335793	1	Link, Treadle
29	307558	1	Washer, Flat, Cam Bracket Mtg	59	445770	1	Nut, 1/4-20 Hex Nylon Insert, Treadle Link Adjusting, Rear
30	446136	2	Lockwasher, 5/16, Top Plate Mounting, L.H. Side				

LOWER REAR FRAME ASSEMBLY - ILLUSTRATION 4



PARTS LIST - ILLUSTRATION 4

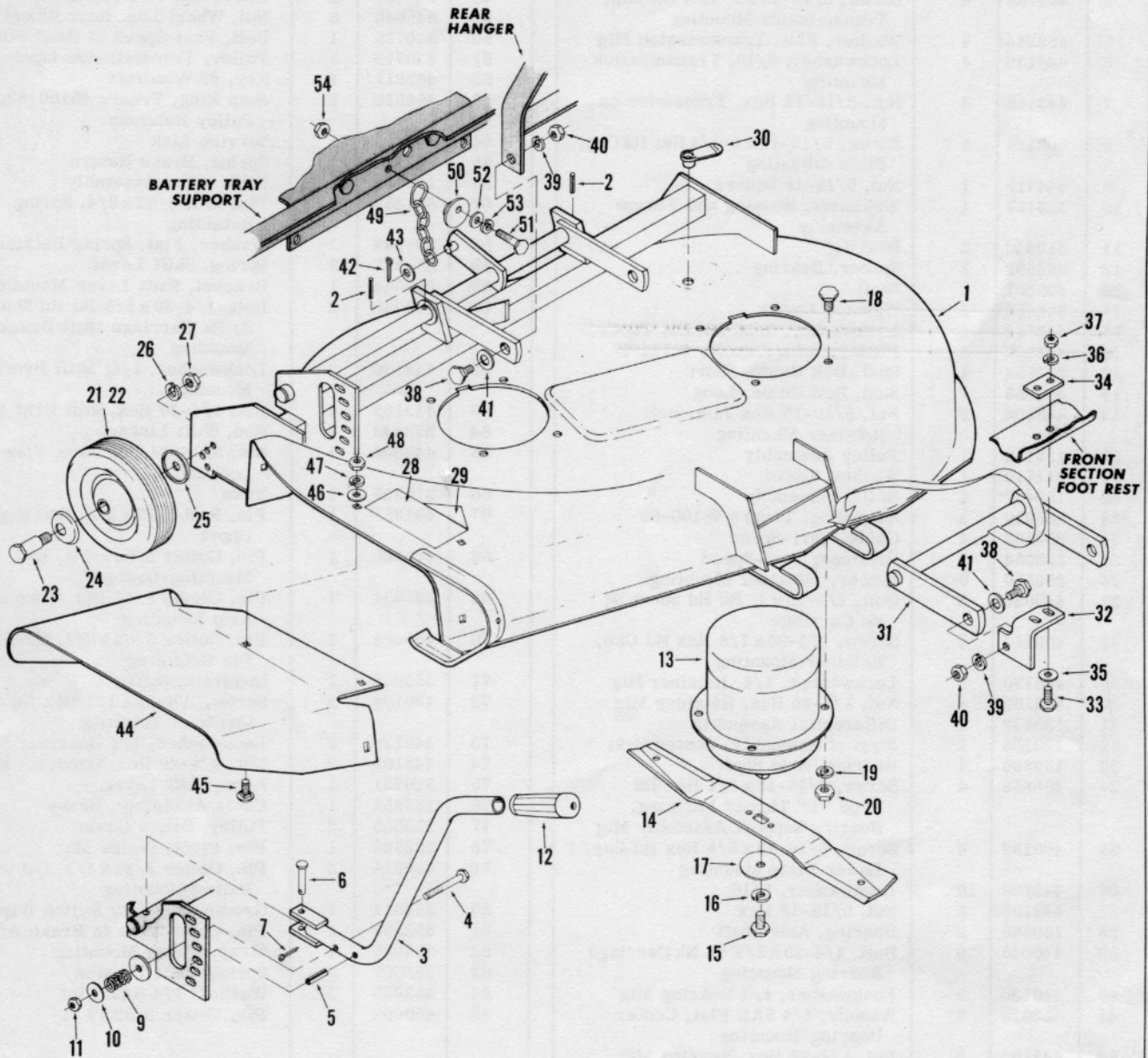
Ref. No.	Part No.	Quan.	Description
1	121691	1	Frame, Rear Lower
2	130111	1	Transmission, Reversing
3	353641	1	Plate, Mounting
4	400188	4	Screw, 5/16-18x1, Hex Hd Cap, Transmission Mounting
5	352344	4	Washer, Flat, Transmission Mtg
6	446136	4	Lockwasher, 5/16, Transmission Mounting
7	443106	4	Nut, 5/16-18 Hex, Transmission Mounting
8	400190	1	Screw, 5/16-18x1-1/4 Hex Hd Cap, Plate Adjusting
9	444718	1	Nut, 5/16-18 Square
10	130134	1	Weldment, Housing and Flange Assembly
11	310646	2	Bearing
12	353582	1	Spacer, Bearing
13	335807	1	Shaft
14	353656	1	Washer, Lower
15	447512	1	Lockwasher, 5/16 Int/Ext Tooth
16	471237	1	Fitting, Lube Alemite #1711-B
17	353654	1	Stud, Belt Guide, Short
18	353655	1	Stud, Belt Guide, Long
19	443806	2	Nut, 5/16-18 Hex Jam, Belt Retainer Mounting
20	130112	1	Pulley Assembly
21	311710	1	Washer, Upper
22	159457	1	Roller Assembly
23	458010	1	Snap Ring, Truarc #5100-62
24	353553	4	Guide, Vari-Speed
25	353554	2	Retainer, Vari-Speed
26	353580	8	Spacer, Retainer Mounting
27	440046	2	Bolt, 1/4-20 x 1, Rd Hd Short Sq Nk Carriage
28	400110	6	Screw, 1/4-20 x 7/8 Hex Hd Cap, Retainer Mounting
29	446130	8	Lockwasher, 1/4, Retainer Mtg
30	443102	8	Nut, 1/4-20 Hex, Retainer Mtg
31	130133	1	Differential Assembly
32	130135	1	Support Assembly, Center Brkt
33	159890	1	Bearing, Axle Shaft
34	408858	4	Screw, 5/16-18x3/4 Hex Hd Type "T" Thread Forming, Bearing Support Assembly Mtg
35	400182	6	Screw, 5/16-18x5/8 Hex Hd Cap, Lower Plate Mounting
36	446136	10	Lockwasher, 5/16
37	443106	6	Nut, 5/16-18 Hex
38	159890	2	Bearing, Axle Shaft
39	440040	9	Bolt, 1/4-20 x 5/8 Sh Nk Carriage Bearing Mounting
40	446130	9	Lockwasher, 1/4 Bearing Mtg
41	453023	3	Washer, 1/4 SAE Flat, Center Bearing Mounting
42	443102	9	Nut, 1/4-20 Hex, Bearing Mtg
43	463019	2	Key, #11 Woodruff, Hub Mtg
44	155006	2	Hub Assembly

Ref. No.	Part No.	Quan.	Description
45	458419	2	Ring, National, X50-231
46	311412	1	Chain, Final Drive
47	344682	2	Cap, Hub
48	120437	2	Wheel and Tire Assembly
49	345640	6	Nut, Wheel Lug, Rear Wheel Mtg
50	330775	1	Belt, Vari-Speed to Gear Box
51	330779	1	Pulley, Transmission Input
52	463017	1	Key, #9 Woodruff
53	458010	1	Snap Ring, Truarc #5100-62, Pulley Retainer
54	470503	1	Service Link
55	352204	1	Spring, Brake Return
56	130132	1	Shift Lever Assembly
57	461352	1	Pin, Roll 3/32 x 3/4, Spring Retaining
58	308949	1	Washer, Flat, Spring Retaining
59	351427	1	Spring, Shift Lever
60	353644	1	Bracket, Shift Lever Mounting
61	440040	2	Bolt, 1/4-20 x 5/8 Rd Hd Short Sq Nk Carriage Shift Bracket Mounting
62	446130	2	Lockwasher, 1/4, Shift Bracket Mounting
63	443102	2	Nut, 1/4-20 Hex, Shift Brkt Mtg
64	353643	1	Rod, Shift Linkage
65	443808	1	Nut, 5/16-24 Hex Jam, Yoke Locking
66	319599	1	Yoke
67	461352	1	Pin, Roll 3/32 x 3/4, Rod Mtg Upper
68	460008	1	Pin, Cotter 5/64 x 3/4, Rod Mounting Lower
69	461451	1	Pin, Clevis 5/16 Dia. Yoke to Arm Mounting
70	460008	1	Pin, Cotter 5/64 x 3/4, Clevis Pin Retaining
71	353652	1	Quadrant, Shift
72	400104	2	Screw, 1/4-20 x 1/2 Hex Hd Cap, Quadrant Mounting
73	446130	2	Lockwasher, 1/4 Quadrant Mtg
74	443102	2	Nut, 1/4-20 Hex, Quadrant Mtg
75	326731	1	Knob, Shift Lever
76	159851	1	Cable Assembly, Brake
77	353555	2	Pulley, Brake Cable
78	353592	1	Pin, Pivot, Pulley Mtg
79	460014	3	Pin, Cotter 3/32 x 1/2, Cable Pulley Mounting
80	352011	1	Grommet, Safety Switch Wire
81	353592	1	Pin, Cable Yoke to Brake Arm
82	353632	1	Strap, Spring Mounting
83	353657	2	Spring, Belt Tension
84	453023	3	Washer, 1/4 SAE Flat
85	460002	1	Pin, Cotter 3/32 x 1/2

14 352344 1 WASHER, LOWER

15 446136 1 5/16 SAE Spring LOCKWASHER

16 400218 1 SCREW, 5/16-24 X 1/2 HEX HD. CAP



PARTS LIST - ILLUSTRATION 5

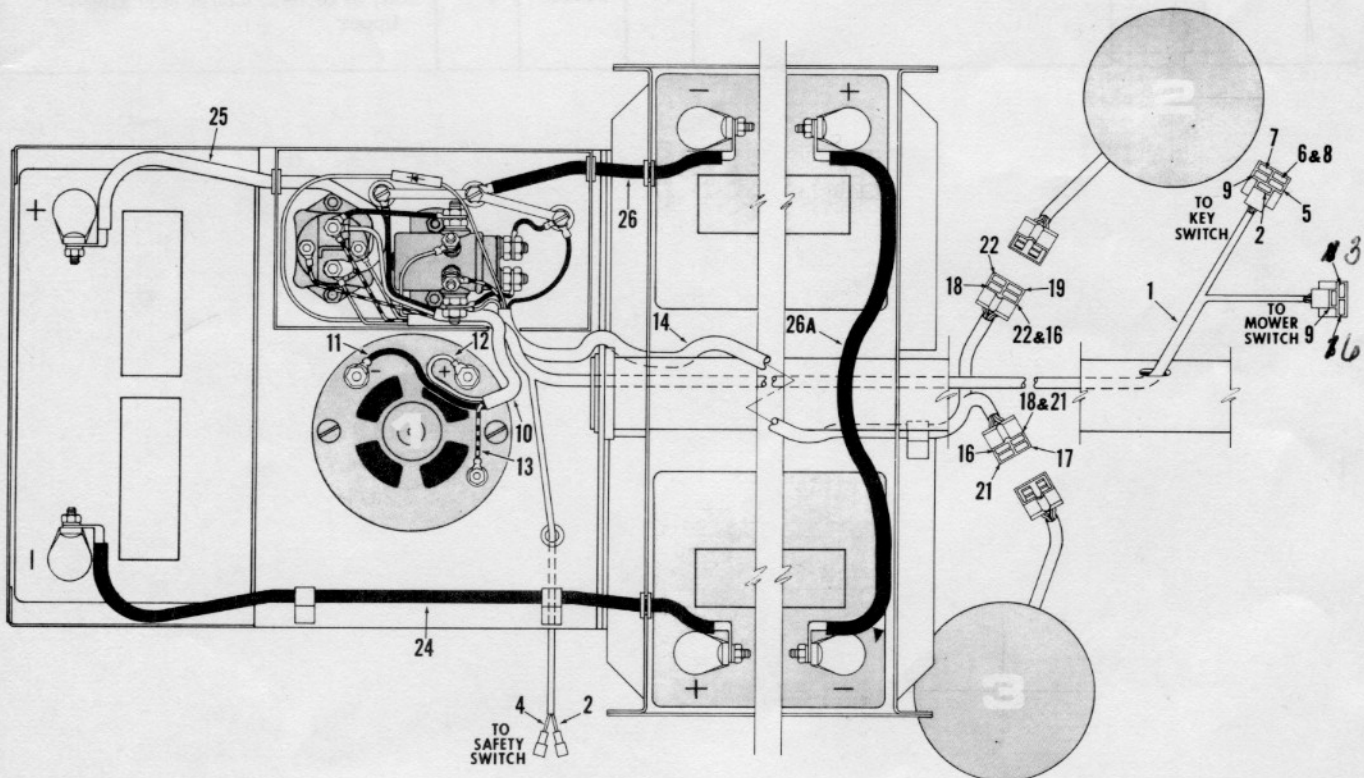
Ref. No.	Part No.	Quan.	Description	Ref. No.	Part No.	Quan.	Description
1	116323	1	Housing Assembly, Mower	27	443818	2	Nut, 1/2-13 Hex Jam, Wheel Mtg
2	461383	2	Pin, 3/16 x 1 Roll, Lift Shaft Mtg	28	353350	1	Decal, Caution
3	130119	1	Weldment, Lift Handle	29		1	Decal, OPEI
4	400124	1	Screw, 1/4-20 x 2-1/2 Hex Hd Cap, Spring Mounting	30	342549	1	Plug, Wash Hole
5	461397	1	Pin, 1/4 x 1-1/4 Roll, Height Location	31	159840	1	Weldment, Front Arm Assembly
6	352699	1	Pin, Lift Handle Mounting	32	335770	2	Bracket, Front Arm Mounting
7	460026	1	Pin, 1/8 x 3/4 Cotter, Lift Handle Mounting	33	400186	4	Screw, 5/16-18 x 7/8 Hex Hd Cap Front Arm Mounting
8	351492	1	Washer, Spring Retainer, Inside	34	353547	2	Plate, Front Bracket Mounting
9	352355	1	Spring, Handle Return	35	453009	4	Washer, 5/16 Flat SAE, Front Arm Mounting
10	307554	1	Washer, Flat-Spring Retainer, Outside	36	446136	4	Lockwasher, 5/16, Front Arm Mounting
11	444708	1	Nut, 1/4-20 C/Lock Gripco, Handle & Spring Retainer	37	443106	4	Nut, 5/16-18 Hex, Front Arm Mtg
12	313982	1	Grip, Lift Handle	38	351585	4	Bolt, 3/8 Shoulder, Linkage Mtg
13	116324	2	Motor, Blade	39	446142	4	Lockwasher, 3/8, Linkage Mtg
14	335769	2	Blade, Cutter	40	443110	4	Nut, 3/8-16 Hex, Linkage Mtg
15	401192	2	Screw, 3/8-24 x 3/4 Hex Hd Cap, Blade to Cutter Motor	41	311710	4	Washer, Linkage Mtg
16	446142	2	Lockwasher, 3/8, Blade to Cutter Motor	42	460026	1	Pin, 1/8 x 3/4 Cotter, Chain Mounting Lower
17	309457	2	Washer, Blade Mounting	43	453011	1	Washer, 3/8 SAE Flat, Chain Mounting Lower
18	400258	8	Screw, 3/8-16 x 3/4 Hex Hd Cap, Blade Motors to Deck	44	328881	1	Chute Extension, Mower
19	446142	8	Lockwasher, 3/8, Blade Motors to Deck	45	440076	4	Bolt, 5/16-18 RD Hd Sq Nk Carriage, Chute Ext. Mounting
20	443110	8	Nut, 3/8-16 Hex, Blade Motors to Deck	46	453009	4	Washer, 5/16 SAE Flat
21	158982	2	Wheel Assembly	47	446136	4	Lockwasher, 5/16
22	351802	2	Tire, 6" Dia. x 1.50 W	48	443106	4	Nut, 5/16-18 Hex
23	344629	2	Bolt, Wheel Mounting	49	353568	1	Chain, Mower Lift
24	312187	2	Retainer, Wheel	50	353574	1	Cam, Chain Support
25	309795	2	Retainer, Seal	51	400190	1	Screw, 5/16-18 x 1-1/4, Hex Hd Cap, Chain Mounting Upper
26	446152	2	Lockwasher, 1/2" Med, Wheel Mtg	52	453009	1	Washer, 5/16 SAE Flat, Chain Mounting Upper
				53	446136	1	Lockwasher, 5/16, Chain Mounting Upper
				54	443106	1	Nut, 5/16 Hex, Chain Mounting Upper

Diagram illustrating the wiring connections for the snowblower's electrical system, showing the battery charger, solenoid (A), fuse (B), and various terminals (1 through 9) connected to the traction motor and main blade motors.

Labels and components shown in the diagram:

- BATTERY CHARGER
- CONNECT RED (OR WHITE) LEAD TO SOLENOID A TERMINAL 2
- CONNECT BLACK LEAD TO FUSE TERMINAL 7
- 100 AMP FUSE
- 80 AMP FUSE
- TRACTION MOTOR
- MAIN BLADE MOTORS
- 23A
- 23B
- 15
- 1
- 2
- 3
- 4
- 5
- 6
- 7
- 8
- 9
- 27
- 23

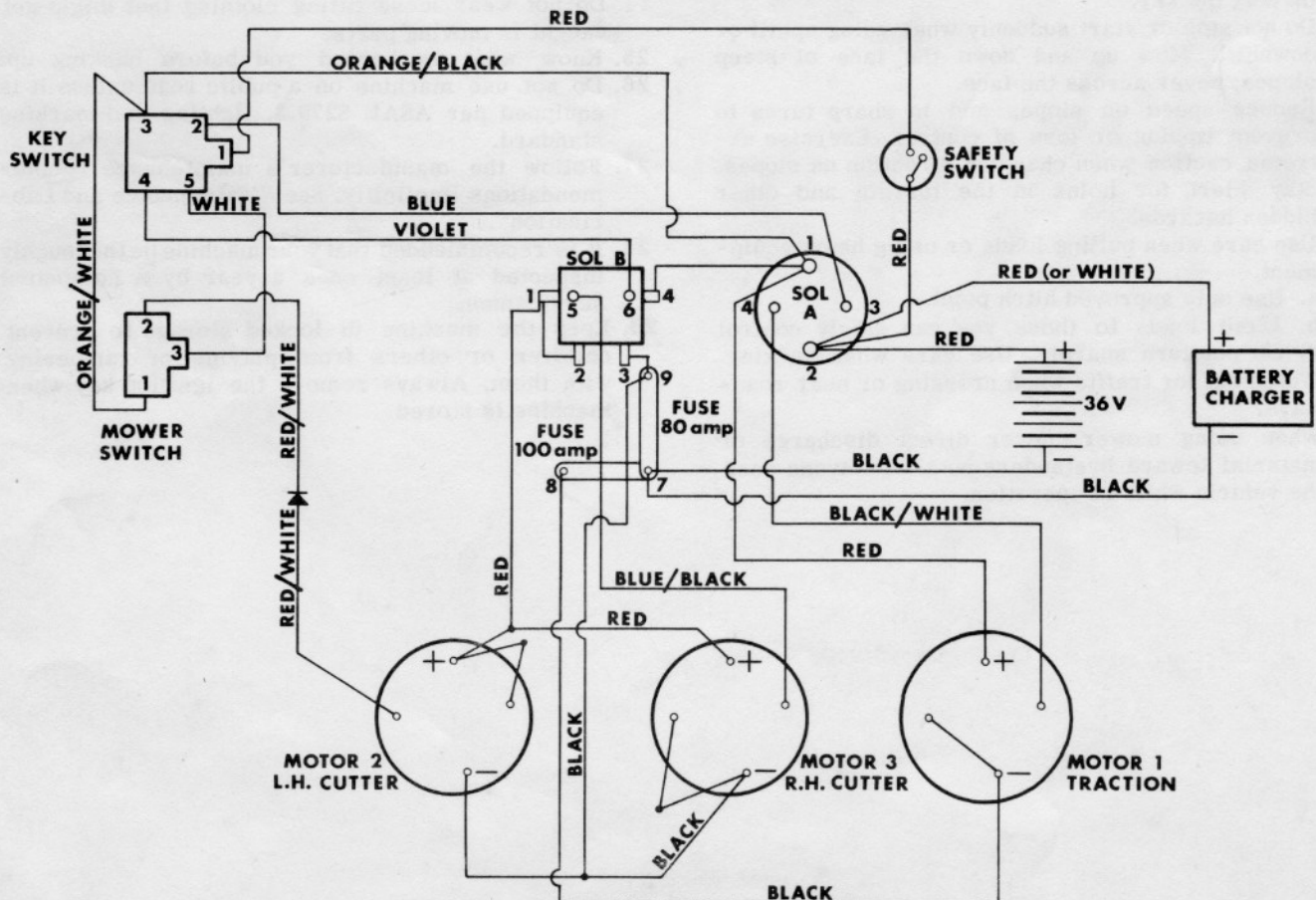
CONNECT BLACK LEAD TO FUSE
TERMINAL 7



PARTS LIST - ILLUSTRATION 6

Ref. No.	Part No.	Quan.	Description
1	130116	1	Wire Harness, Main, (Includes Ref. No's 2 thru 9)
2		1	#16 Wire, Red, Key Switch to Safety Switch
3		1	#16 Wire, Red & White, Mower Switch to Diode
4		1	#16 Wire, Red, Safety Switch to Solenoid "A" Terminal 2
5		1	#18 Wire, Blue, Key Switch to Solenoid "A" Terminal 3
6		1	#18 Wire, Orange & White, Key Switch to Mower Switch
7		1	#18 Wire, Violet, Key Switch to Solenoid "B" Terminal 6
8		1	#18 Wire, Orange & Black, Key Switch to Solenoid "A" Terminal 1
9		1	#18 Wire, White, Key Switch to Mower Switch
10	130117	1	Wire Harness, Traction Motor, (Includes Ref. No's 11, 12 & 13)
11		1	#10 Wire, Black, Motor 1 (-) to 100 Amp Fuse Terminal 8
12		1	#10 Wire, Red, Motor 1 (+) to Solenoid "A" Terminal 1
13		1	#18 Wire, Black & White, Motor 1 to Solenoid "A" Terminal 4
14	130118	1	Wire Harness, Blade Motors, (Includes Ref. No's 15 thru 22)
15		1	#10 Wire, Red, Junction with Wire (Ref. No. 16) to Solenoid "B" Terminal 1
16		1	#12 Wire, Red, Motor 2 (+) to Junction with Wire (Ref. No. 15) to Motor 3 (+)
17		1	#18 Wire, Black & Blue, Motor 3 to Solenoid "B" Terminal 5
18		1	#12 Wire, Black, Motor 2 (-) to Junction with Wire (Ref. No. 20) to Motor 3 (-)
19		1	#16 Wire, Red & White, Motor 2 to Diode
20		1	#10 Wire, Black, Junction with Wire (Ref. No. 18) to 80 Amp Fuse Terminal 9
21		1	#18 Wire, Green, Motor 3 (-) to Cut-Out Switch
22		1	#18 Wire, Green, Motor 2 (+) to Cut-Out Switch
23	353564	1	#10 Wire, Black, Solenoid "A" Terminal 1 to Solenoid "B" Terminal 4
23A	353564	1	#10 Wire, Black, Solenoid "B" Terminal 3 to 80 Amp Fuse Terminal 9
23B	353564	1	#10 Wire, Black, Solenoid "B" Terminal 1 to Solenoid "B" Terminal 2
24	353565	1	#4 Cable, Black, Battery 2 (+) to Battery 3 (-)
25	353566	1	#4 Cable, Red, Battery 3 (+) to Solenoid "A" Terminal 2
26	353567	1	#4 Cable, Black, Battery 1 (-) to Fuse Terminal 7
26A	353567	1	#4 Cable, Black, Battery 1 (+) to Battery 2 (-)
27	335782	1	Diode

SCHEMATIC





THE OPEI LABEL IS THE BUYERS ASSURANCE THAT A MODEL OF THIS MOWER HAS BEEN TESTED BY AN INDEPENDENT TESTING LABORATORY, AND FOUND TO CONFORM WITH THE SAFETY SPECIFICATIONS FOR POWER LAWN MOWERS PUBLISHED BY THE AMERICAN NATIONAL STANDARDS INSTITUTE.

SAFE OPERATION PRACTICES FOR ELECTRIC RIDING VEHICLES

1. Know the controls and how to stop quickly. READ THE OWNER'S MANUAL.
2. Do not allow children to operate the vehicle. Do not allow adults to operate it without proper instruction.
3. Do not carry passengers. Keep children and pets a safe distance away.
4. Clear the work area of objects which might be picked up and thrown.
5. Turn off mower and shift into neutral before attempting to start the motor.
6. Turn off mower and stop the motor before leaving the operator's position.
7. Turn off mower and stop the motor before making any repairs or adjustments.
8. Turn off mower when transporting or not in use for safety and to conserve power.
9. Take all possible precautions when leaving the vehicle unattended, such as turning off the mower, lowering the mower, shifting into neutral, setting the parking brake, stopping the motor and removing the key.
10. Do not stop or start suddenly when going uphill or downhill. Mow up and down the face of steep slopes; never across the face.
11. Reduce speed on slopes and in sharp turns to prevent tipping or loss of control. Exercise extreme caution when changing direction on slopes.
12. Stay alert for holes in the terrain and other hidden hazards.
13. Use care when pulling loads or using heavy equipment.
 - a. Use only approved hitch point.
 - b. Limit loads to those you can safely control.
 - c. Do not turn sharply. Use care when backing.
14. Watch out for traffic when crossing or near roadways.
15. When using mower, never direct discharge of material toward bystanders no allow anyone near the vehicle while in operation.
16. Disconnect the power cord connection from tractor to mower before handling or servicing mower.
17. Keep the vehicle and mower in good operating condition and keep safety devices in place.
18. Keep all nuts, bolts, and screws tight to be sure the equipment is in safe working condition.
19. Plug tractor charger cord into a normal 115-volt 3-hole grounded receptacle. Do not use a 2-hole adapter unless properly grounded.
20. Keep motors free of grease, leaves or grass to prevent heat build-up.
21. The vehicle and mower should be stopped and inspected for damage after striking a foreign object, and the damage should be repaired before restarting and operating the equipment.
22. Do not attempt to operate tractor when not in operator's seat.
23. When using mower:
 - a. Mow only in daylight or in good artificial light.
 - b. Check the blade mounting bolts for proper tightness at frequent intervals.
24. Do not wear loose fitting clothing that might get caught in moving parts.
25. Know what is behind you before backing up.
26. Do not use machine on a public road unless it is equipped per ASAE S279.3, lighting and marking standard.
27. Follow the manufacturer's maintenance recommendations implicitly. See "Maintenance and Lubrication".
28. It is recommended that your machine be thoroughly inspected at least once a year by a competent serviceman.
29. Keep the machine in locked storage to prevent children or others from playing or tampering with them. Always remove the ignition key when machine is stored.