



INSTRUCTIONS

48" SNOW/DOZER BLADE ANGLING HANDLE KIT

Model KB84

The AB48 Snow/Dozer Blade requires the KB84 Angling Handle Kit and AP56 Implement Mounting Bracket to make it operable on Elec-Trak tractors with front electric lift.

1. Place a 5/8-inch washer over the round end of the angling rod, and insert this end of the rod into the rear opening of the pivot plate and through the right-hand hole in the bottom surface of the pivot plate. Place another 5/8-inch washer on the end of the angling rod protruding through the pivot plate bottom and secure it with a hair pin cotter. See Figure 1

2. Attach the lower end of the angling handle to the pin at the free end of the angling rod and secure it with a hair pin cotter.
3. Complete the installation by following the instructions provided with the Snow/Dozer Blade.

NOTE: When removing the Snow/Dozer Blade from the tractor, it is not necessary to disconnect the angling handle and rod from the pivot plate.

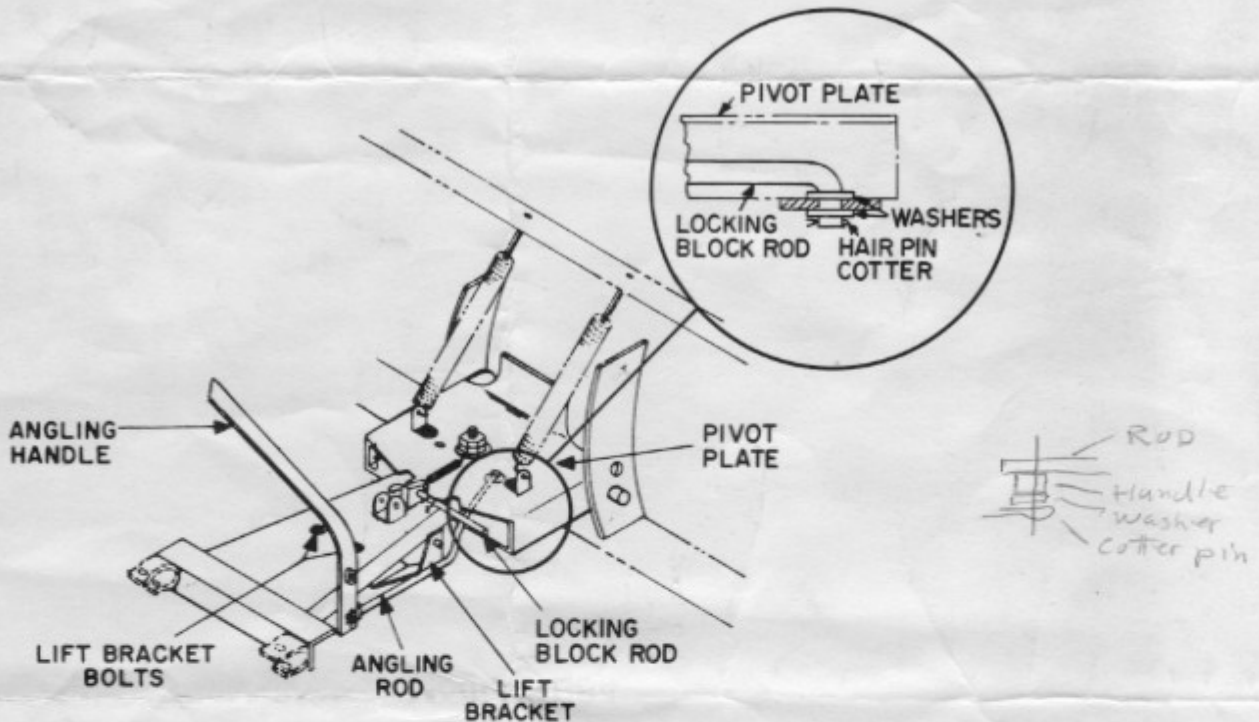


Figure 1