



## INSTRUCTIONS

### E12M HEAVY-DUTY TRANSAXLE CONVERSION KIT

#### MODEL KM12

**WARNING:** The Power Disconnect must always be opened before working near tractor electrical components. Failure to do so could result in personal injury or damage to the tractor wiring.

1. Jack the rear of the tractor. Remove the rear wheels and disconnect the brake-rod clevis from the brake caliper. Remove the transaxle from the frame.
2. Place the template over the existing frame cut-out for the shift lever on the top side, and outline the area to be removed as indicated by the template by drilling 1/4-inch corner holes and then sawing between the holes. See Figure 1.

**NOTE:** If it is desired to enlarge the cut-out from the underside of the frame, the template can be reversed and placed on the underside to outline the area. (Do not tip the tractor up on end with the batteries in place.)

3. Transfer the transaxle pulley to the new transaxle, allowing 1/4-inch spacing between the pulley hub and the casting boss, as shown in Figure 2. Tighten the set screw on the key to 110-130 inch-pounds.
4. Remove the brake caliper and the brake disk and key from the old transaxle.
5. Attach the brake caliper to the new brake plate (furnished) as shown in Figure 3.
6. Install the brake disk, key, and the brake plate on the new transaxle with the spacer between the plate and the transaxle. Use hex head bolts, 3/8-16 x 1-inch (furnished) and lockwashers (original). See Figure 3.
7. Install the new shift lever and gasket on the new transaxle and tighten its mounting screws with 10 foot-pounds of torque. Make sure the transaxle can be shifted into all gears before proceeding.

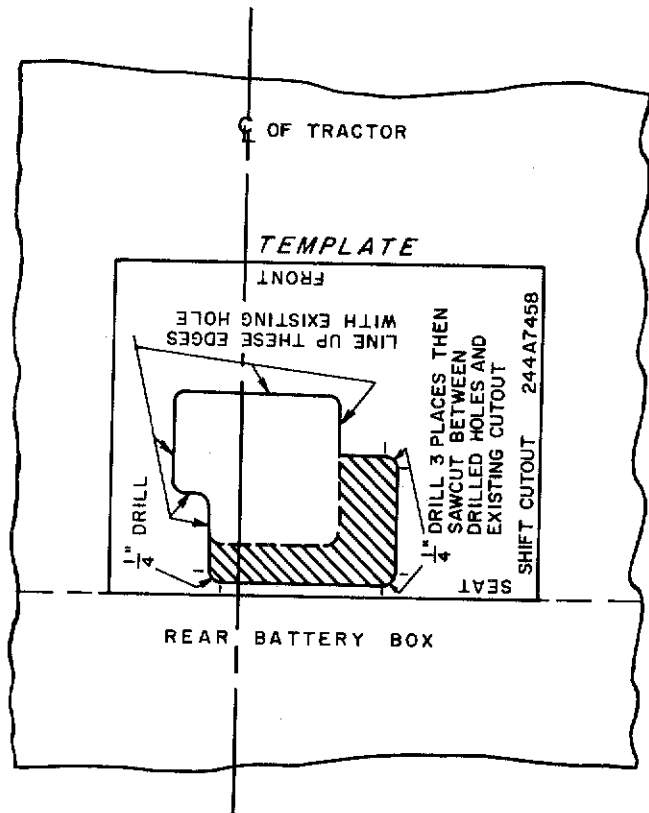


Figure 1

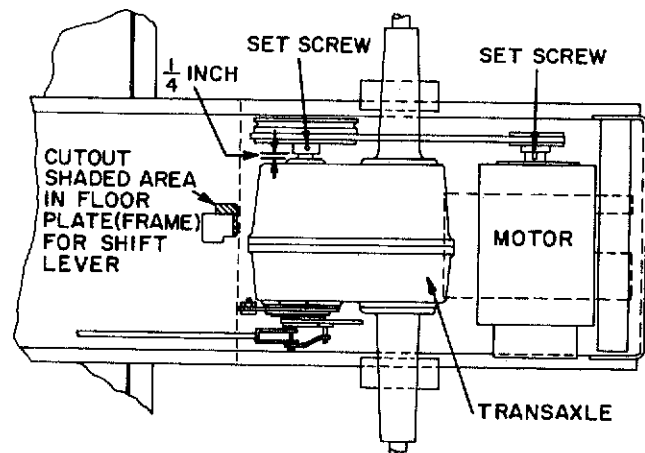


Figure 2

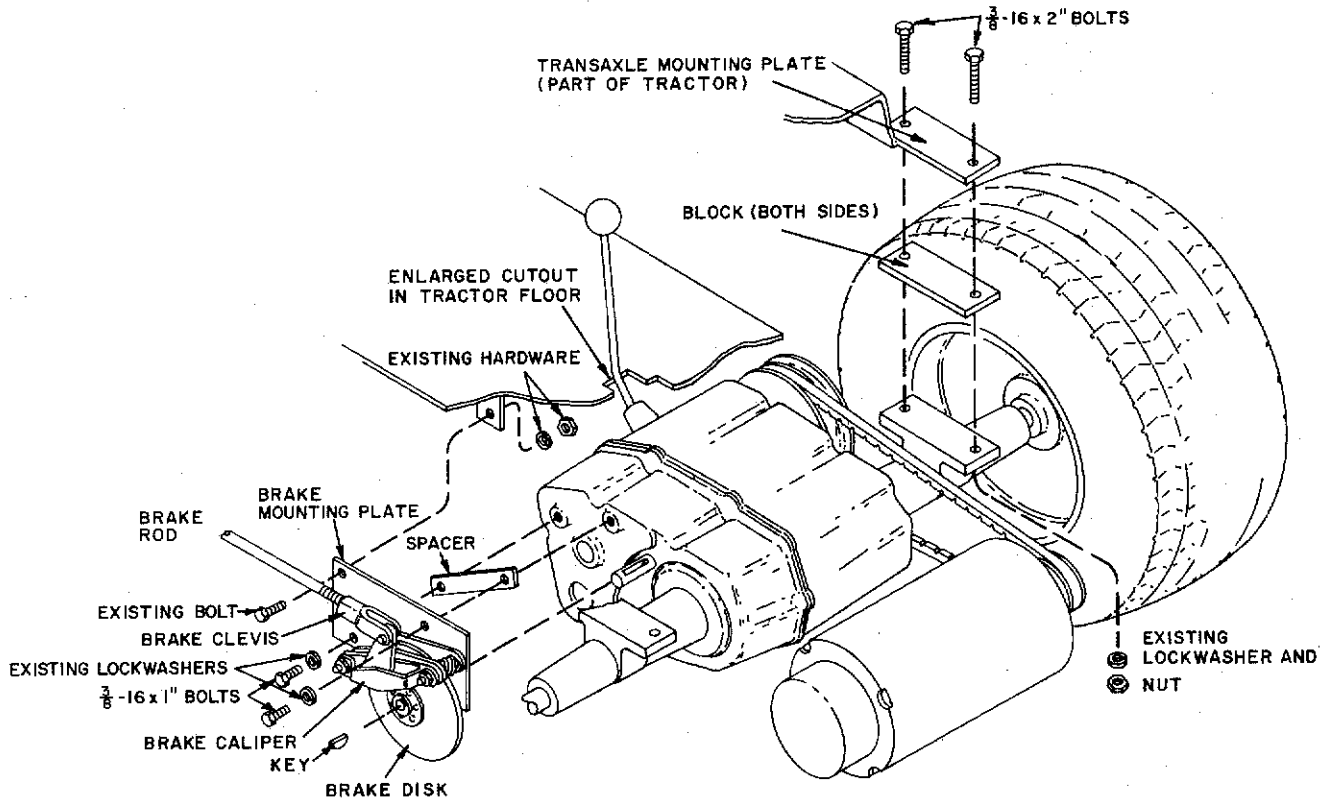


Figure 3

8. Reverse the motor pulley (hub in), but do not tighten set-screw.
9. Install the transaxle on the frame with the drive belt in place (on the inside groove of the double-groove transaxle pulley), placing blocks between the transaxle and the frame mounting pads. Use 3/8-16 x 2-inch bolts (furnished) and the original lockwashers and nuts. See Figure 3.
10. Secure the top front corner of the brake plate to the frame tab with the original bolt, lockwasher and nut as shown in Figure 3.
11. Align the motor pulley with the transaxle pulley and tighten the set-screw to 110-130 inch-pounds.
12. Connect the brake-rod clevis to the brake cam and readjust the brake if necessary. Adjust the drive belt tension and test the brake. Follow instructions for adjustments in the Owner's Use and Care Manual.
13. Transfer the wheel hubs and keys to the new transaxle.
14. Mount the rear wheels and test the tractor.