



# Electrak<sup>®</sup>

## Tractor

### INSTRUCTIONS

#### DEALER SET-UP INSTRUCTIONS - E12M MID-MOUNTED ROTARY MOWER

Model AH42

Initial set-up of the AH42 Rotary Mower requires assembly and adjustment as follows:

#### DISCHARGE FLAP (Rear Discharge Only)

The rear discharge flap is "sandwiched" between the metal strip and the underside of the deck so the flap hangs over the rear discharge opening. Secure with seven screws, nuts and lockwashers with the screws inserted from the top side of the deck.

#### LIFTING CHAINS

Attach the end links of the 3-link chains to the lifting bracket pins located in the center area of the mower deck. Secure each with a washer and cotter pin. (See Figure 1.)

#### REAR MOWER ROLLER ASSEMBLY

Assemble the rollers, with a washer between each, onto the shaft and insert the shaft ends into the adjusters.

Attach the adjusters to the mower-deck rear corners and secure each in the third lowest guide-pin hole with a thumbscrew. Thread a locknut on each screw until the nut is flush with the end of the screw. (See Figure 2.)

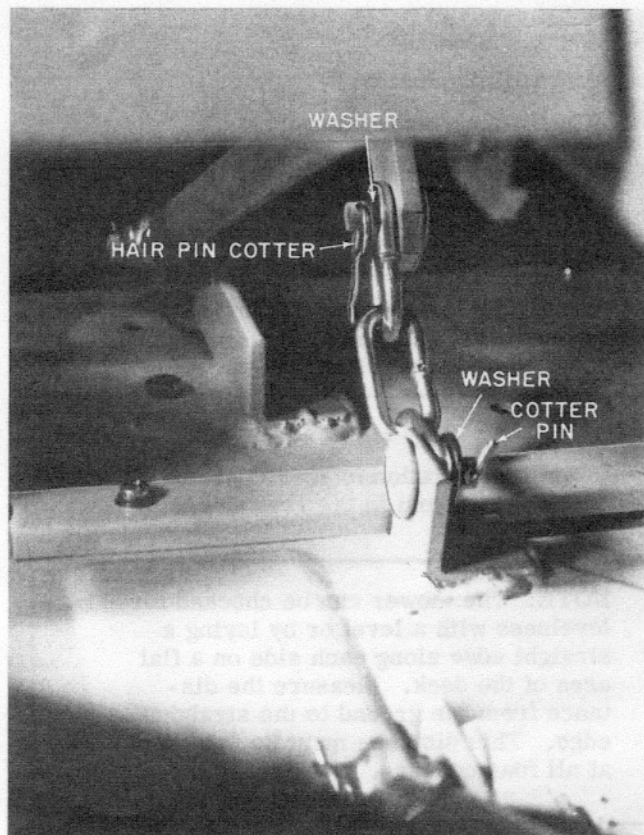


Figure 1

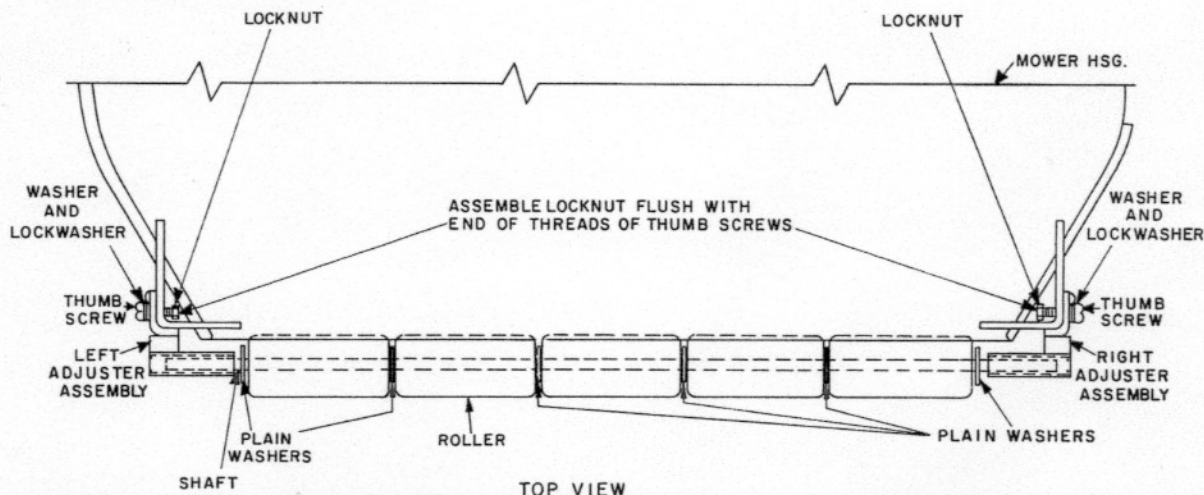


Figure 2

