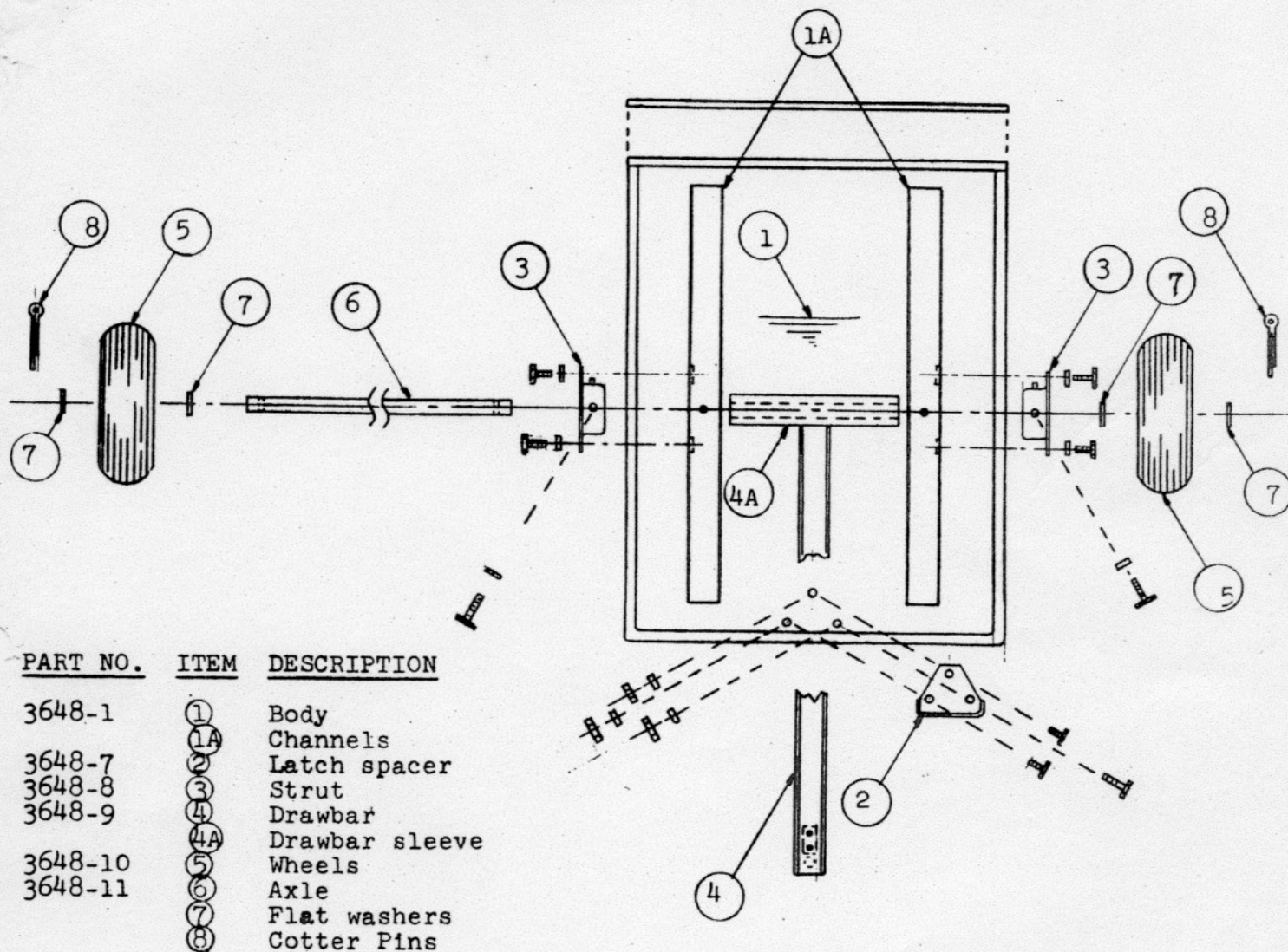


GENERAL ELECTRIC

ELEC-TRAK TRACTOR CART MODEL AF12

PARTS LIST AND ASSEMBLY INSTRUCTIONS



PART NO.	ITEM	DESCRIPTION
3648-1	①	Body
	①A	Channels
3648-7	②	Latch spacer
3648-8	③	Strut
3648-9	④	Drawbar
	④A	Drawbar sleeve
3648-10	⑤	Wheels
3648-11	⑥	Axle
	⑦	Flat washers
	⑧	Cotter Pins

ASSEMBLY INSTRUCTIONS

1. Turn cart over, bottom side up.
2. Loosely bolt strut ③ (right and left) to channels ①A with lock washers under the bolt heads (Nuts are welded in place).
3. Facing front to rear, slide axle ⑥ through strut sleeve on the left side; then turn the drawbar ④ so that the latch is toward the floor. Slide the axle through the drawbar sleeve ④A to the right side. Place the 1-1/2" flat washers ⑦ on each side of the axle, then slide the wheels ⑤ on the axle as shown, valve stem to the outside; add washers ⑦ on the outside of the wheels and put cotter pins ⑧ in holes in the ends of the axle. Tighten bolts of struts.
4. Tip cart on its tailgate and bolt latch spacer ② in place with 3 bolts, lock washers and nuts. The bolts should point down through the floor.