



# Electrak<sup>®</sup>

## Tractor

### INSTRUCTIONS

GEH-3958

### CANOPY TOP

#### Model BC11

### PARTS

The Elec-Trak tractor Canopy Top is shipped disassembled. Check to see that the following parts are included in the package:

Part	Qty
Canopy Cover	1
Front and Rear Frame Member	2
Side Frame Member	2
Front Upright	2
Rear Upright	2
Front Mounting Bracket	1
Rear Mounting Bracket	2
Rear Cross Brace	2
1/2-20 x 3/4" Hex Bolt	8
1/4-20 x 1 1/4" Hex Bolt	2
1/4-20 x 1/2" Hex Bolt	2
1/4-20 Lock Nut	12
5/16-18 x 3/4" Hex Bolt	2
5/16-18 x 1" Hex Bolt	2
Washer	4
5/16-18 Lock Nut	4

These parts may be identified from Fig. 1

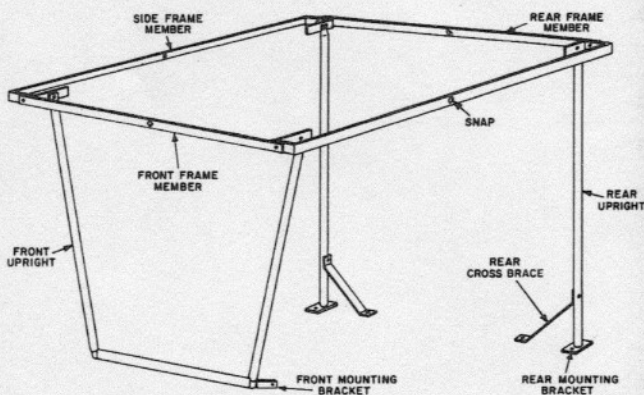


Figure 1

### ASSEMBLY

The first piece to be installed is the front mounting bracket. This front bracket is located one inch up from the center of the bottom of the cowl at the

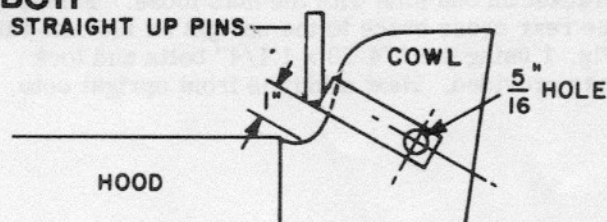


Figure 2

rear edge of the hood. (See Fig. 2). When positioned properly, the bracket will rest flat against the front of the cowl surface with the two solid pins pointing upright. Hold the bracket in place on the cowl so that two holes on the sides can be located. These should be drilled with a 5/16" drill. Fasten the brackets to the cowl with the 5/16-18 x 1" bolts and lock nuts provided. Do not fasten any bolts tightly until the frame is completely assembled.

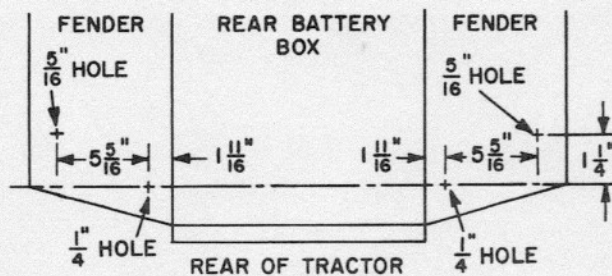


Figure 3

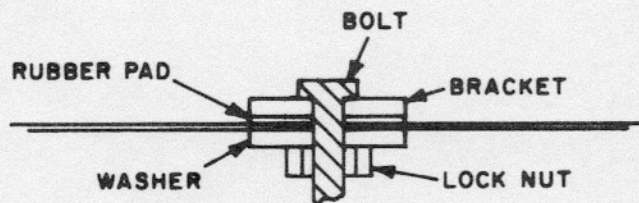


Figure 4

Next, the rear brackets are put in place. The locations and size for the holes may be obtained from Fig. 3. Drill four holes. Position the rear mounting brackets on the fenders as indicated in Fig. 1 with the rubber surface next to the fender. Fasten with 5/16-18 x 3/4" bolts, washers and lock nuts as indicated in Fig. 4.

General Electric Company  
Outdoor Power Equipment Operation  
Corporations Park, Bldg. 702  
Schenectady, N. Y. 12305

GENERAL  ELECTRIC

