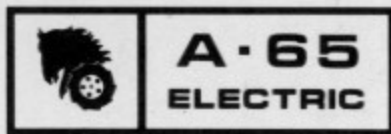


1975 PARTS MANUAL

for



FACTORY ORDER NO. 3-6000



Price \$1.00

WHEEL HORSE

lawn & garden tractors

FORM NO. 80397Z

803432

FACTORY ORDER NUMBERS

Factory order numbers and serial numbers are necessary to order parts. The serial number is on a plate attached to the driver's instruction plate. Motor numbers are on each motor. The transmission number is on the transmission.

TO ORDER PARTS

1. Enter factory order numbers and serial numbers.

Rider _____

Traction Motor _____

Transmission _____

2. Locate the desired part in the illustration and note its item number.
3. Locate the item number in the parts list. Order by both **part number** and **description**.

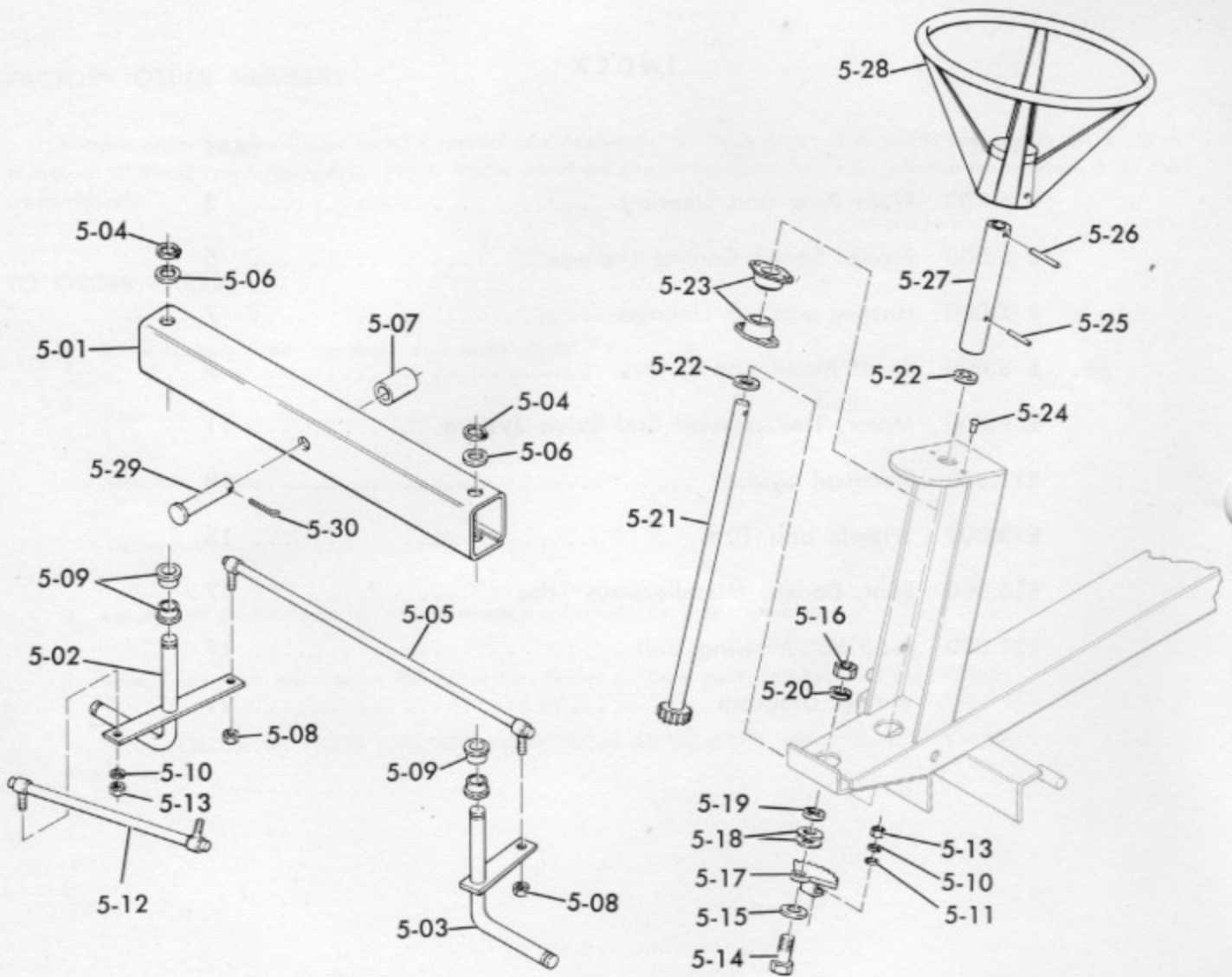
ORDER ALL PARTS THROUGH YOUR LOCAL AUTHORIZED WHEEL HORSE DEALER.

At the time of printing (2-75), product information and specifications, as shown, were correct. Wheel Horse Products, Inc. reserves the right to change product specifications, designs and standard equipment without notice and without incurring obligation.

INDEX

GROUP	PAGE
E 5.000 Front Axle and Steering	3
E 6.000 Brake, Speed Control Linkage	5
E 7.000 Hitches and Lift Linkage	7
E 8.000 Sheet Metal and Covers	9
E 9.000 Motor, Transmission and Drive System	11
E11.000 Electrical System	13
E13.000 Wheels and Tires	15
E15.000 Seat, Decals, Miscellaneous Trim	17
E21.000 A-65 36" Mowing Unit	19
Wiring Diagram	21

FIG. 5 FRONT AXLE AND STEERING

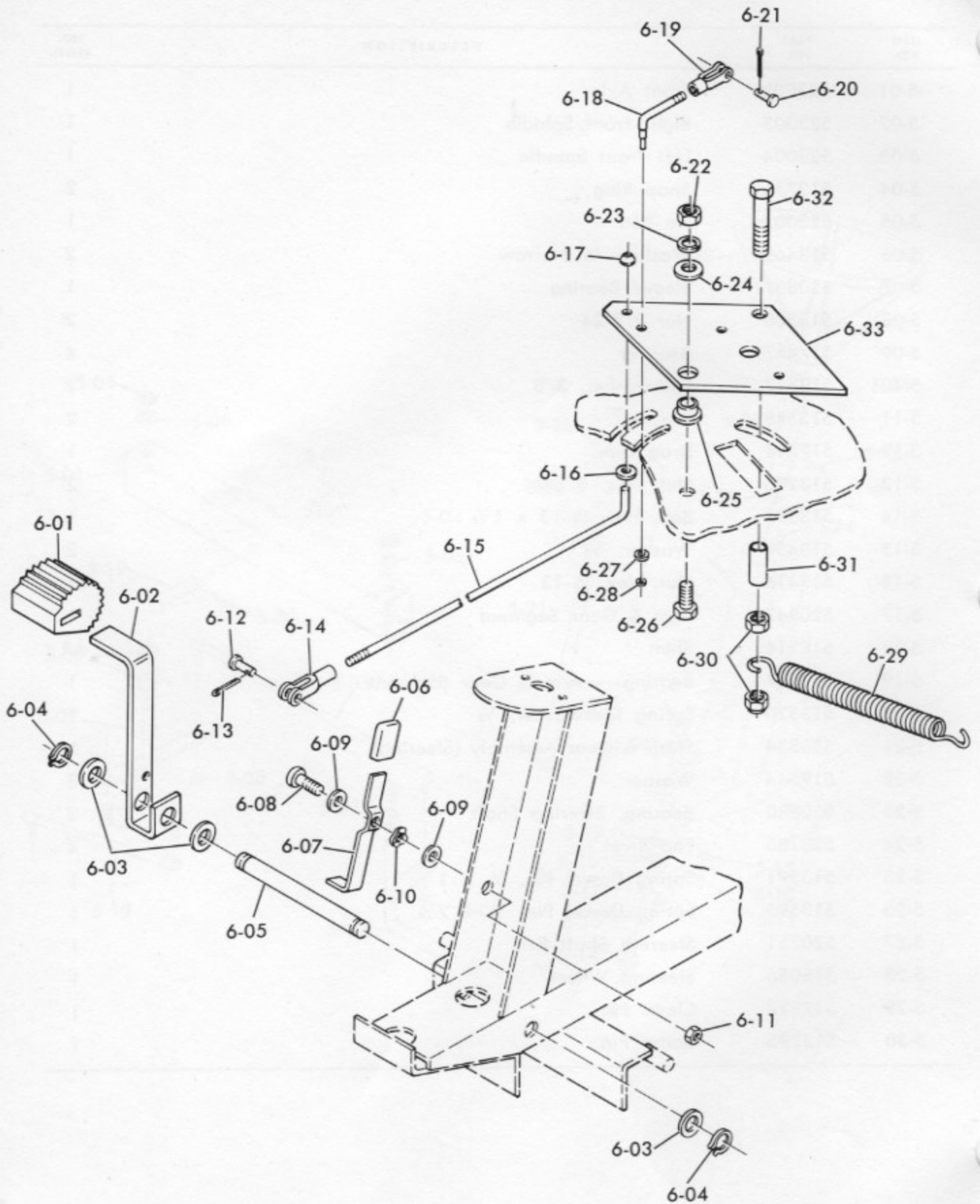


A-65 PARTS MANUAL

E5.000 FRONT AXLE AND STEERING (FIG. 5)

ITEM NO.	PART NO.	DESCRIPTION	NO. REQ'D.
5-01	523002	Front Axle	1
5-02	523003	Right Front Spindle	1
5-03	523004	Left Front Spindle	1
5-04	513756	Snap Ring	2
5-05	523007	Tie Rod	1
5-06	513462	Washer, $\frac{3}{4}$ Narrow	2
5-07	520837	Sleeve Bearing	1
5-08	513300	Nut 3/8-24	2
5-09	517447	Bearing	4
5-10	513517	Lockwasher, 3/8	2
5-11	513548	Washer	2
5-12	517211	Drag Link	1
5-13	513296	Nut, Hex, 3/8-24	2
5-14	513377	Bolt, Hex $\frac{1}{2}$ -13 x $1\frac{1}{2}$	1
5-15	513459	Washer, $\frac{1}{2}$	2
5-16	513416	Nut, Hex $\frac{1}{2}$ -13	1
5-17	520847	Arm & Gear Segment	1
5-18	518216	Shim	AR
5-19	520907	Bearing — Arm & Gear Segment	1
5-20	513520	Spring Lockwasher, $\frac{1}{2}$	1
5-21	520834	Shaft & Gear Assembly (Steering)	1
5-22	519544	Washer	2
5-23	520880	Bearing, Steering Shaft	2
5-24	520185	Pop Rivet	4
5-25	513591	Spring Dowel Pin, $\frac{1}{4}$ x 1	1
5-26	513595	Spring Dowel Pin, $\frac{1}{4}$ x $2\frac{1}{4}$	1
5-27	520751	Steering Shaft Ext.	1
5-28	515056	Steering Wheel	1
5-29	517727	Clevis Pin	1
5-30	513295	Cotter Pin	1

FIG. 6 BRAKE, SPEED CONTROL LINKAGE



A-65 PARTS MANUAL

E6.000 BRAKE AND SPEED CONTROL (FIG. 6)

ITEM NO.	PART NO.	DESCRIPTION	NO. REQ'D.
6-01	520964	Pad, Brake Pedal	1
6-02	517239	Brake Pedal	1
6-03	513459	Washer, 1/2	3
6-04	513754	Retaining Ring, 1/2	3
6-05	520973	Pin, Brake Pedal	1
6-06	519927	Grip, Parking Brake	1
6-07	520905	Parking Brake Lever	1
6-08	513657	Screw, Machine, #10-32 x 3/4	1
6-09	513465	Washer, #10	2
6-10	517828	Curved Washer	1
6-11	513418	Locknut #10-32 all steel	1
6-12	517638	Clevis Pin	1
6-13	513567	Cotter Pin 3/32 x 3/4	1
6-14	519334	Clevis, Clutch Rod	1
6-15	519275	Clutch Rod	1
6-16	513467	Washer, 1/4	1
6-17	517592	Spring Clip	1
6-18	519274	Brake Rod	1
6-19	519344	Clevis, Brake Rod	1
6-20	517638	Clevis Pin	1
6-21	513567	Cotter Pin, 3/32 x 3/4	1
6-22	513416	Nut, Hex 1/2-13	1
6-23	513520	Spring Lockwasher, 1/2	1
6-24	513459	Washer, 1/2 Plain	1
6-25	520243	Bearing	1
6-26	513375	Bolt, Hex 1/2-13 x 1 1/4	1
6-27	519338	Washer, 1/4 Plain	1
6-28	517592	Push Nut	1
6-29	519552	Spring, Clutch	1
6-30	513425	Locknut, 3/8-16 All Metal	2
6-31	518069	Spacer	1
6-32	513366	Bolt, Hex 3/8-16 x 2 3/4	1
6-33	521902	Plate, Motor	1

