

INSTALLATION INSTRUCTIONS FOR

POWER PACK BOOSTER. BUNDLE NO. 120-0017

POWER PACK BOOSTER

Model AP84

The Power Pack Booster is designed to extend the range of the EGT 120 & 150 Tractors. To make the unit operable, initial electrical receptacle installation must be made for connection to the tractor wiring.

WARNING: To prevent injury, be careful when working in the uncovered battery box to avoid shorting terminals with wires or tools.

4. Locate and drill a 3/16-inch hole in the top of the left fender using the template provided as shown in Fig. 1.

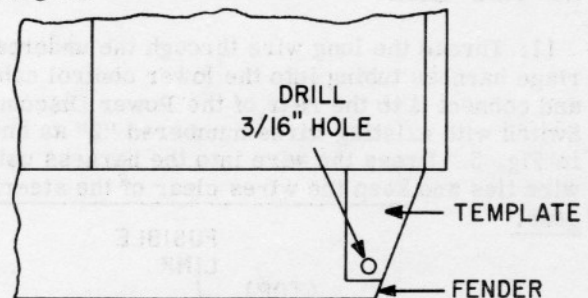


Figure 1. Left Fender (Top View)

CAUTION: Use of any batteries in the power pack booster other than the 12-volt AVCO NEW IDEA batteries specified, voids all battery and electrical system warranties on the tractor.

RECEPTACLE INSTALLATION

Rear Mounting

1. Open the power disconnect.

WARNING: The Power Disconnect must always be opened before working near tractor electrical components. Failure to do so could result in personal injury or damage to the tractor wiring.

2. Remove the lower control panel cover and the screws retaining the upper control panel. Hinge the upper control panel forward.

3. Remove the plastic cover over the power pack units in the rear battery box. Disconnect and remove the batteries.

NOTE: If the 7/8-inch hole is pre-punched as shown in Fig. 2, it may not be necessary to remove the batteries. Wires can be "fished" through the frame opening with a long, stiff, wire inserted from below the frame.

5. Locate and punch or drill a 7/8-inch hole in the left side of the rear battery box using the template provided as shown in Fig. 2. Remove any metal chips from inside the battery box.

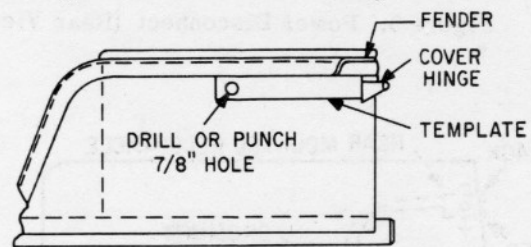


Figure 2. Battery Box (Left Side)

6. Insert a grommet in the 7/8-inch hole just drilled.

7. Thread the long wire from the receptacle through the grommet from the outside of the box. Train the wire along the upper left and front edges of the battery box, and through the tubing used in the undercarriage harness to pass from the battery box to the underside of the frame. Keep plenty of slack above the frame to accommodate battery reinstallation.

8. Thread the short wire of the receptacle through the grommet.

9. Attach the receptacle to the left fender as shown in Fig. 3.

ASSEMBLE WITH DOVETAILS
OPPOSITE MOUNTING SURFACE

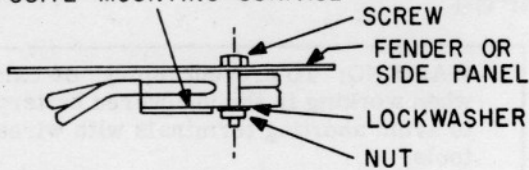


Figure 3. Receptacle Mounting

10. Replace the batteries following the layout in Fig. 4. **DO NOT RECONNECT THE BATTERIES AT THIS TIME!**

11. Thread the long wire through the undercarriage harness tubing into the lower control cabinet and connect it to the rear of the Power Disconnect Switch with existing wires numbered "2" as shown in Fig. 5. Dress the wire into the harness using wire ties and keep the wires clear of the steering gear.

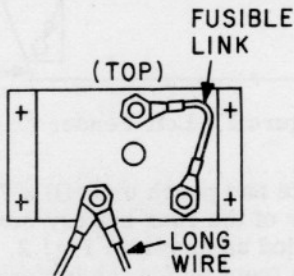


Figure 5. Power Disconnect (Rear View)

12. Reconnect the batteries as shown in Fig. 4, connecting the short receptacle wire to the clamp on the negative post of battery B5.

13. Engage the power disconnect and test the receptacle for power. Make sure the red connector is of positive polarity.

14. Reassemble the plastic battery cover and control panel cover, and close the upper control panel.

Front Mounting

1. Open the Power Disconnect.

2. Remove the plastic cover from the front power pack units. Disconnect the battery cable from the battery B2 positive post.

WARNING: To prevent injury, be careful when working in the uncovered battery box to avoid shorting terminals with wires or tools.

3. Remove the screws retaining the upper control panel. Hinge the upper control panel forward.

4. Locate and drill a 3/16-inch hole in the right side panel using the template provided as shown in Fig. 6. Place a cloth inside the drilling area to prevent metal chips from entering the compartment.

5. Attach the receptacle to the inside of the right side panel as shown in Fig. 3.

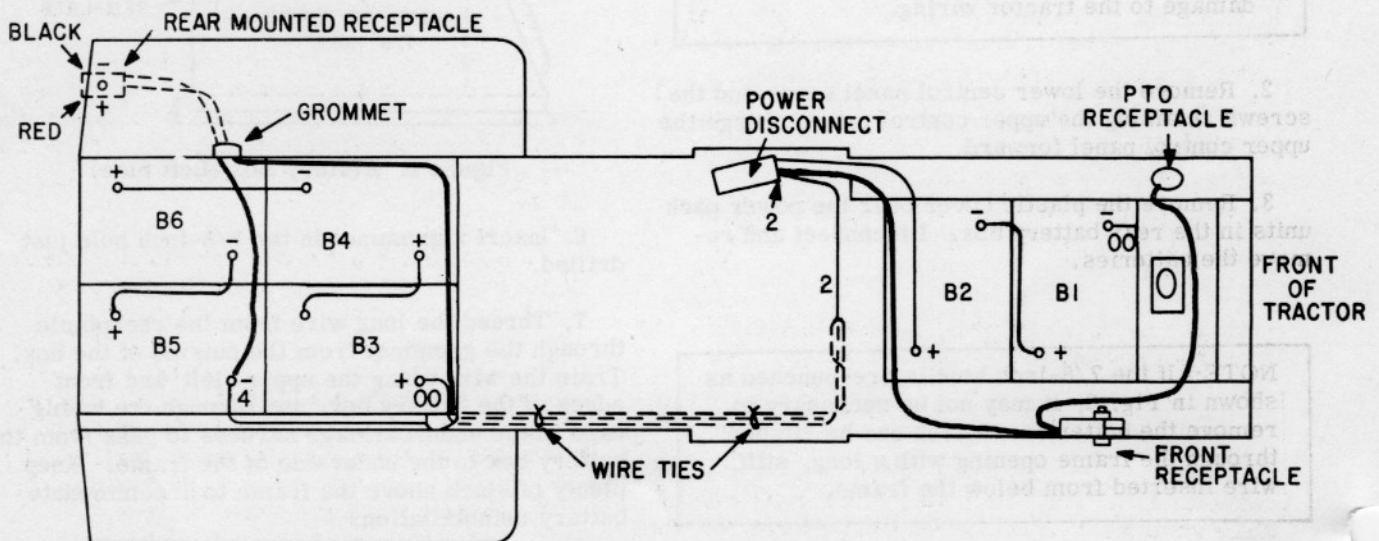


Figure 4. Wiring Layout (Top View)

