

INSTALLATION INSTRUCTIONS FOR WEIGHT/UTILITY

BOX - EGT 80 AND EGT 100 TRACTORS. BUNDLE NO.

100-0004.

The Weight/Utility Box provides the Electric tractor owned with a multi-purpose attachment that can be used to carry ballast to increase traction, tools for outdoor repairs, or standard Electric tractor accessories such as the hedge trimmer.

ASSEMBLY

Initial assembly of the Weight/Utility Box is made as shown in Figure 1. The carriage bolt heads should be inside the box and the angle bracket is secured below the mounting arms.

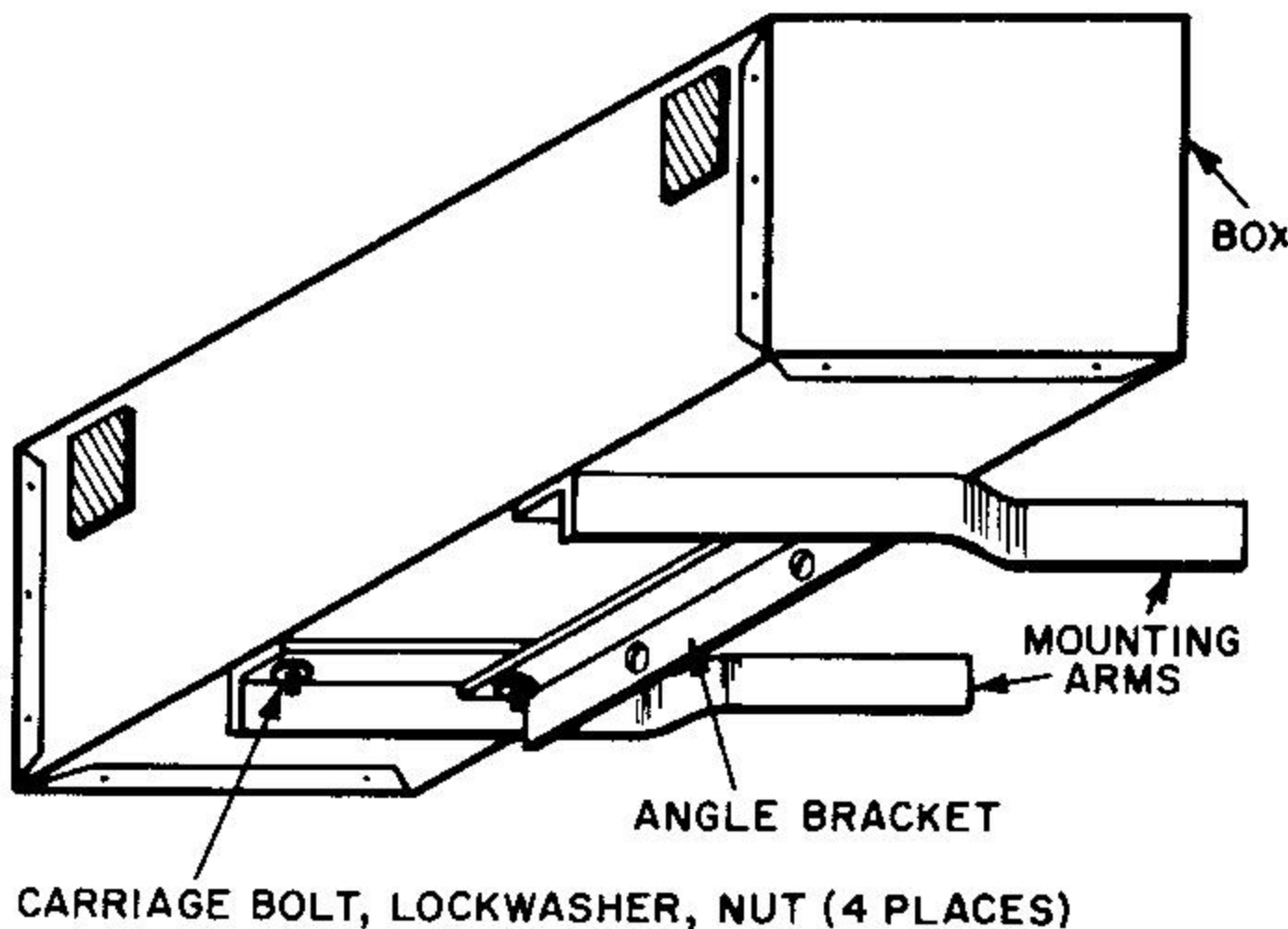


Figure 1

After assembly, mount the box as outlined under "Installation." Hold the assembly so the angle bracket is flush with the tractor frame and punch the frame corresponding to the centers of the 7/16 inch diameter angle bracket holes. Remove the Weight/Utility Box and drill the 7/16 inch diameter holes in the frame. Permanent installation can now be made.

INSTALLATION

Holding the Weight/Utility Box with its mounting arms extending out and slightly downward,

place the front lower edge of the box on the tractor hitch. Releasing the box will allow its mounting arms to rest against the underside of the frame. Secure the assembly to the tractor with a 3/8-16 x 1 1/4 inch bolt, lockwasher and nut in each set of holes in the angle bracket and the corresponding holes in the frame.

With the installation complete, if ballast is required, fill the box as follows:

The amount of weight necessary for desired traction depends on the attachment being used, the terrain encountered, weight of the operator and surface condition. Normally 100 to 150 pounds provides excellent results. The following table may be used as a guide to determine the amount of material needed. These weight guides apply only if the box is completely filled:

<u>Material</u>	<u>Weight</u>
Steel	430 lbs.*
Iron	390 lbs.*
Patio Blocks (5)	200 lbs.*
Masonry Bricks	110 lbs.
Dry Sand or Earth	90-100 lbs.

*Total ballast should not exceed 150 pounds or the bracket could bend or break. Weights are given to estimate fractions of the total capacities.

NOTE: Tire chains are recommended for all snow removal operations.

MAINTENANCE

If sand or earth is used as ballast, a plastic bag may be used to line the box to prevent rust formation. A light coating of grease will also inhibit rust formation if any other materials are used. In any case, the Weight/Utility Box should be emptied and thoroughly cleaned yearly.