

INSTALLATION INSTRUCTIONS FOR REAR

ELECTRIC LIFE. BUNDLE NO. 120-0011.

The Rear Electric Lift is designed to be used with rear mounted Sleeve Hitch.

This instruction gives general information about the operation, installation, and maintenance of the rear electric lift and specific instructions for use with the attachment can be found in the attachment use and care manual.

OPERATION

The rear lift can be operated without leaving the tractor seat and control is similar to that of the front tractor lift. With an attachment properly mounted, the lift switch is held forward to raise the attachment, rearward to lower it. Spring loading returns the switch to its center position upon release.

NOTE: Do not continue to power the lift after its raised limit has been reached. Such abuse will trip the circuit breaker in the lift or will blow the protective fuse.

The lift circuit breaker resets automatically after a few minutes to allow cooling. The fuse is located in an "in-line" fuse housing in the lift wiring under the rear battery box cover. This fuse can be removed by holding the housing and turning the end cap one-quarter turn to the left. Replace with a 3AG30SB fuse only. These fuses are available from your dealer.

INSTALLATION

NOTE: Initial installation of the Rear Electric Lift requires the wiring of the power cord and its receptacle to the power pack and drilling a retaining hole in the tractor frame. This installation is to be performed by your dealer only.

Insert the lift arms in corner frame openings at the rear of the tractor. Push the assembly in so it is flush with the rear of the tractor frame.

Retain the lift in this position with the clevis pin which passes through the hole in the forward edge of the lift and the corresponding hole in the tractor frame. (Hole in tractor frame is drilled by dealer.) Secure the pin with the hair pin cotter on the lower end of the clevis pin.

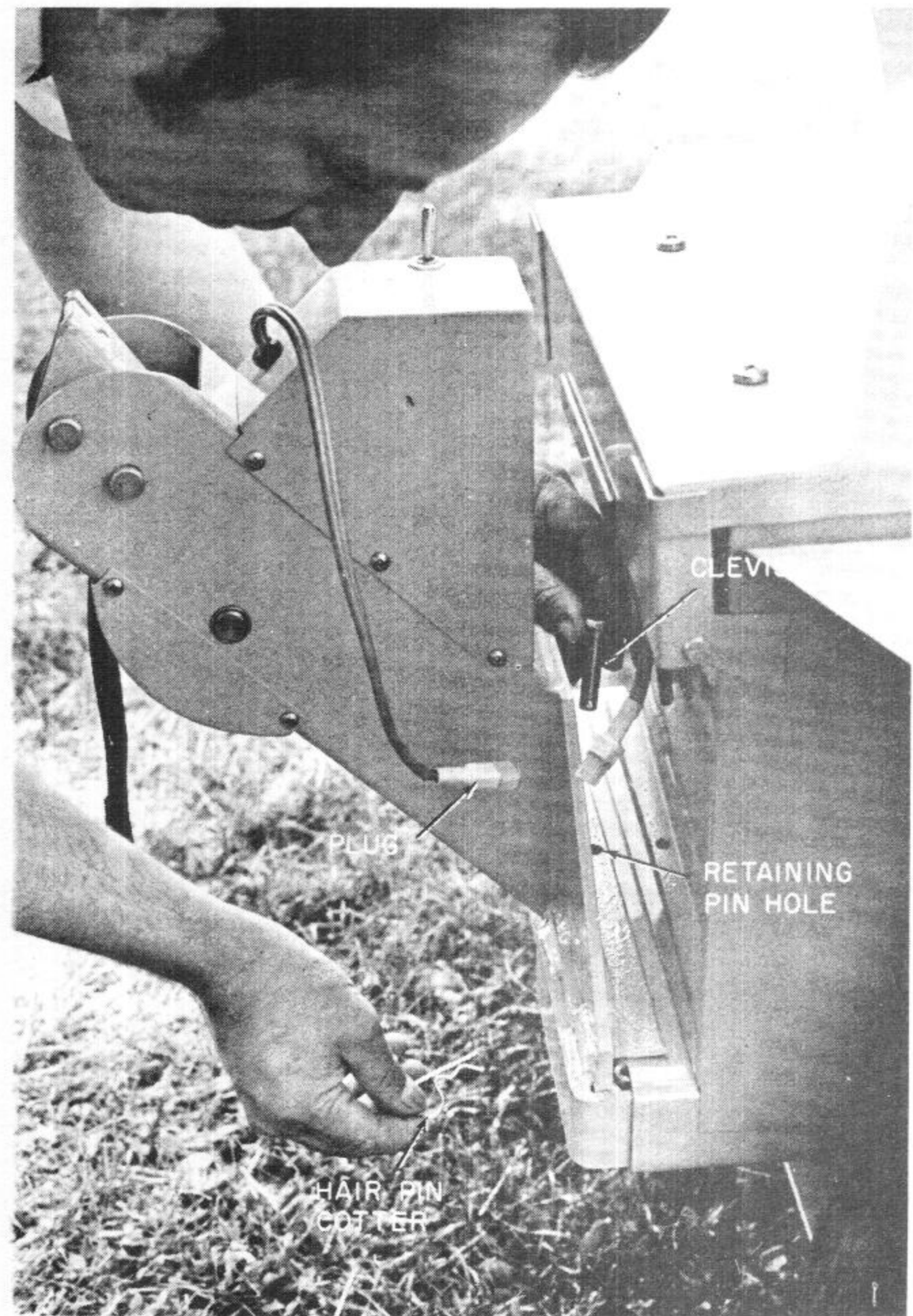


Figure 1. Rear Electric Lift Installation

DEALER INSTRUCTIONS - REAR ELECTRIC LIFT

LIFT POWER CORD WIRING

The power cord and receptacle for the rear electric lift is a permanent installation that is made in the rear battery box compartment as follows:

1. Remove rear battery hold-down and plastic battery cover.
2. Thread cord over the right battery box cover hinge, then through the battery box end opening under the cover. This allows the cord to hang out the right side so it will not be pinched when the cover is opened or closed.
3. Attach power cord wires as illustrated in Figure 1. Observe color coding for connections.
4. Replace plastic battery cover so power cord exits cutout on right side. Be sure fuse

- holder is outside the cover for accessibility.
5. Place power cord clamp on cord and secure it as shown when replacing the rear-most battery hold down. Before tightening, fully adjust cord in clamp for maximum length outside of tractor.

RETAINING PIN INSTALLATION

Mount the lift at the rear of the tractor in the normal fashion making sure it is flush with the tractor frame. Along its forward edge between the mounting arms is a 3/8-inch hole located on the welded angle iron. Mark the location of this hole on the rear edge of the tractor frame and remove the lift. Drill a 3/8-inch hole in the frame so it will align with the corresponding hole in the lift weldment.

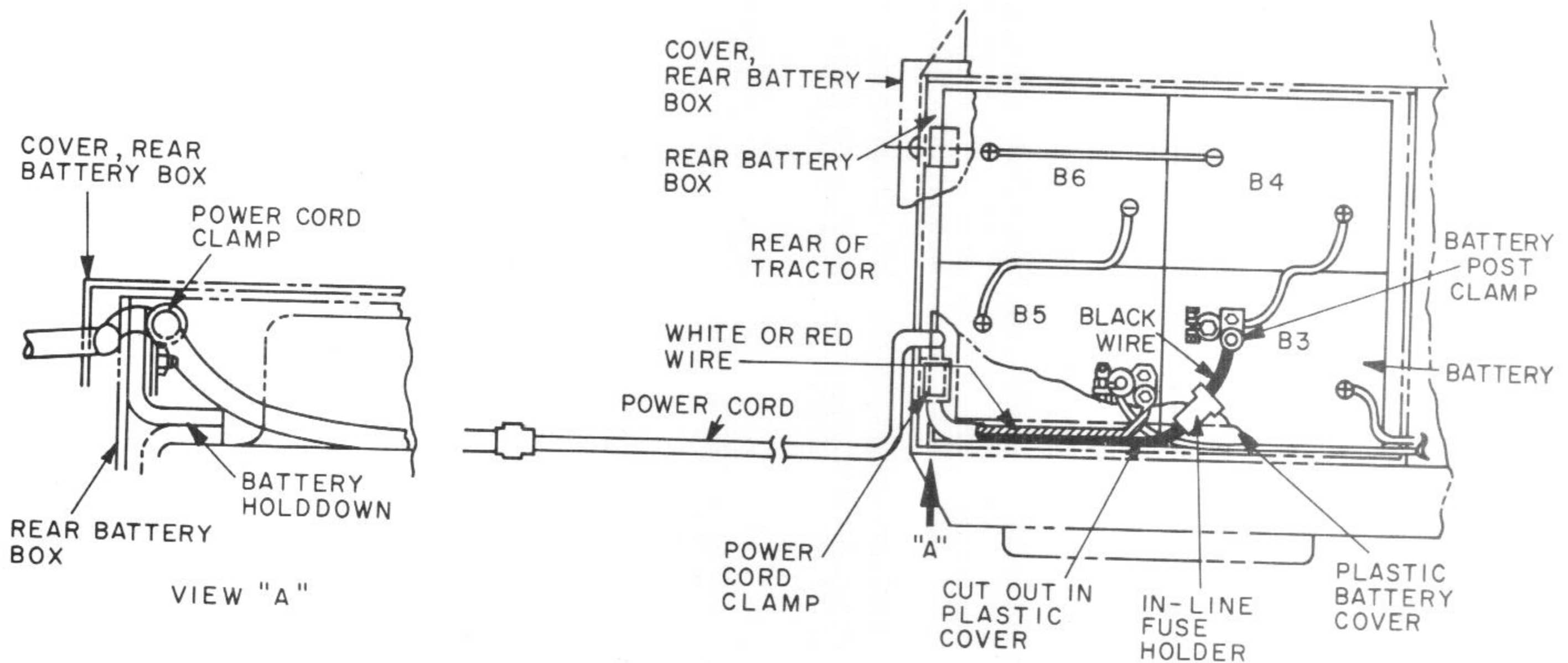


Figure 1. Power Cord Wiring.

Plug the lift cord plug into the lift cord receptacle which is wired into the rear battery box. Notice that the plug and receptacle are keyed so only the proper connection can be made. Run the lift down until there is sufficient strap to thread properly.

Refer to the instruction sheet for the attachment used for specific lift strap threading information.

LUBRICATION

The rear lift requires seasonal lubrication consisting of a drop or two of 30 weight machine oil at the bearing end of each rotating axle. Frequency of lubrication should be increased if greater-than-average use occurs or if operated in a dusty atmosphere.

SERVICE

No regular service or maintenance is required on the rear electric lift. If service other than replacement of the lift strap is required, contact your tractor dealer.