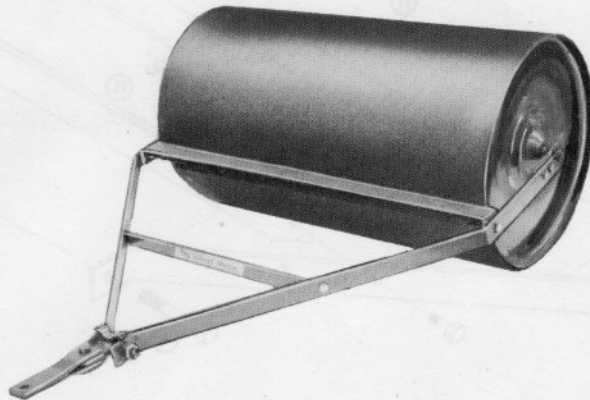


PARTS LIST AND INSTRUCTIONS

LAWN ROLLER

FACTORY ORDER NUMBER 7-2312

(Formerly 7-2311)



The Lawn Roller is packaged complete in one carton.

First take one of the frame side bars, Part No. 2569, and one of the axle pivot tubes, Part No. 2570, and bolt together, with the channel toward the tank, using the $\frac{1}{4}$ -20 x $\frac{3}{4}$ bolts and nuts. Place one of the washers on the tank pivot shaft and insert one of the cotter pins. Repeat the same operation on the other side.

Next, bolt the scraper bar, Part No. 2572, to the frame bars, using the $\frac{3}{8}$ -16 x $1\frac{1}{4}$ bolts and nuts in the third hole of the frame bar.

Install the Frame Support, Part No. 2571, using the other two $\frac{3}{8}$ -16 x $1\frac{1}{4}$ bolts and nuts.

Bolt the Swivel Assembly, Part No. 2563, to the frame with the $\frac{1}{2}$ -13 x $3\frac{3}{4}$ bolt and lock nut. Be sure that the bent piece is on top.

Now bolt the Hitch Bar, Part No. 2560, to the Swivel Assembly with the $\frac{1}{2}$ -13 x $1\frac{3}{4}$ bolt and nut.

To fill with water remove the pipe plug and rotate the tank so that the hole is nearest the top, which enables you to put more water in the tank.

To drain the water, simply remove the pipe plug and rotate the tank so that the hole is on the bottom.

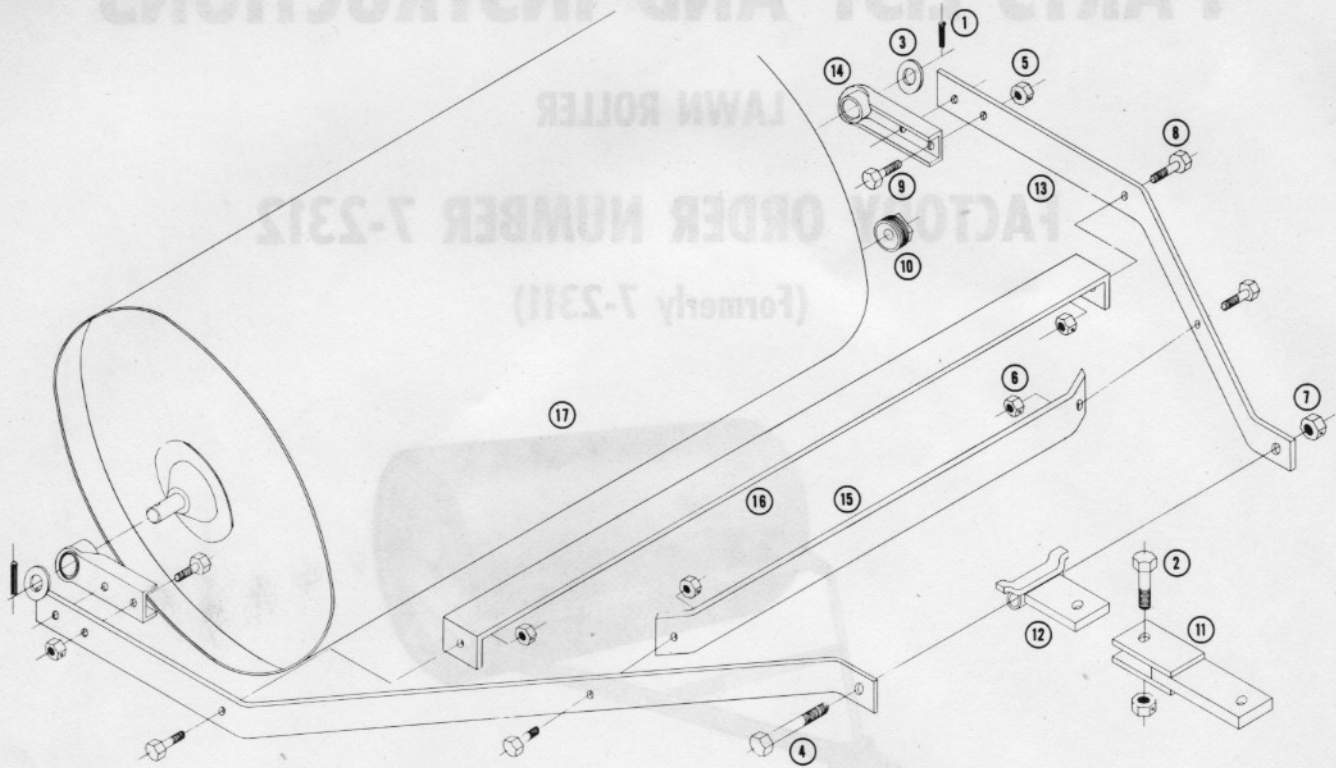
CAUTION: Water should be drained for storage through the winter.



WHEEL HORSE

lawn & garden tractors

PARTS DRAWING



PARTS LIST — LAWN ROLLER

FACTORY ORDER NUMBER 7-2312

Parts available only through Authorized Dealers.
 When ordering parts always list Part No. and Description.
(Specifications subject to change without notice.)

ITEM NO.	PART NO.	DESCRIPTION	NO. REQ'D.
1	932036	Cotter Pin $\frac{3}{16}$ Dia. x $1\frac{1}{2}$	2
2	908060	Hex Hd. Cap Screw $\frac{1}{2}$ -13 x $1\frac{3}{4}$	1
3	920017	Flat Washer 1"	2
4	908068	Hex Hd. Cap Screw $\frac{1}{2}$ -13 x $3\frac{3}{4}$	1
5	915111	Nut, $\frac{1}{4}$ -20 Eslok	4
6	915113	Nut, $\frac{3}{8}$ -16 Eslok	4
7	915665	Nut, $\frac{1}{2}$ -13 E.S.	2
8	908035	Hex Hd. Cap Screw $\frac{3}{8}$ -16 x $1\frac{1}{4}$	4
9	908003	Hex Hd. Cap Screw $\frac{1}{4}$ -20 x $\frac{3}{4}$	4
10	943423	1" Pipe Plug	1
11	2560	Hitch Bar Assembly	1
12	2563	Swivel Assembly	1
13	2569	Frame Side Bar	2
14	2570	Axle Pivot Tube	2
15	2571	Frame Support	1
16	2572	Scraper Bar	1
17	2573	Tank Assembly	1
18	103174	Decal — Wheel Horse	2

WHEEL HORSE PRODUCTS, INC. 515 W. Ireland Road South Bend, Indiana 46614