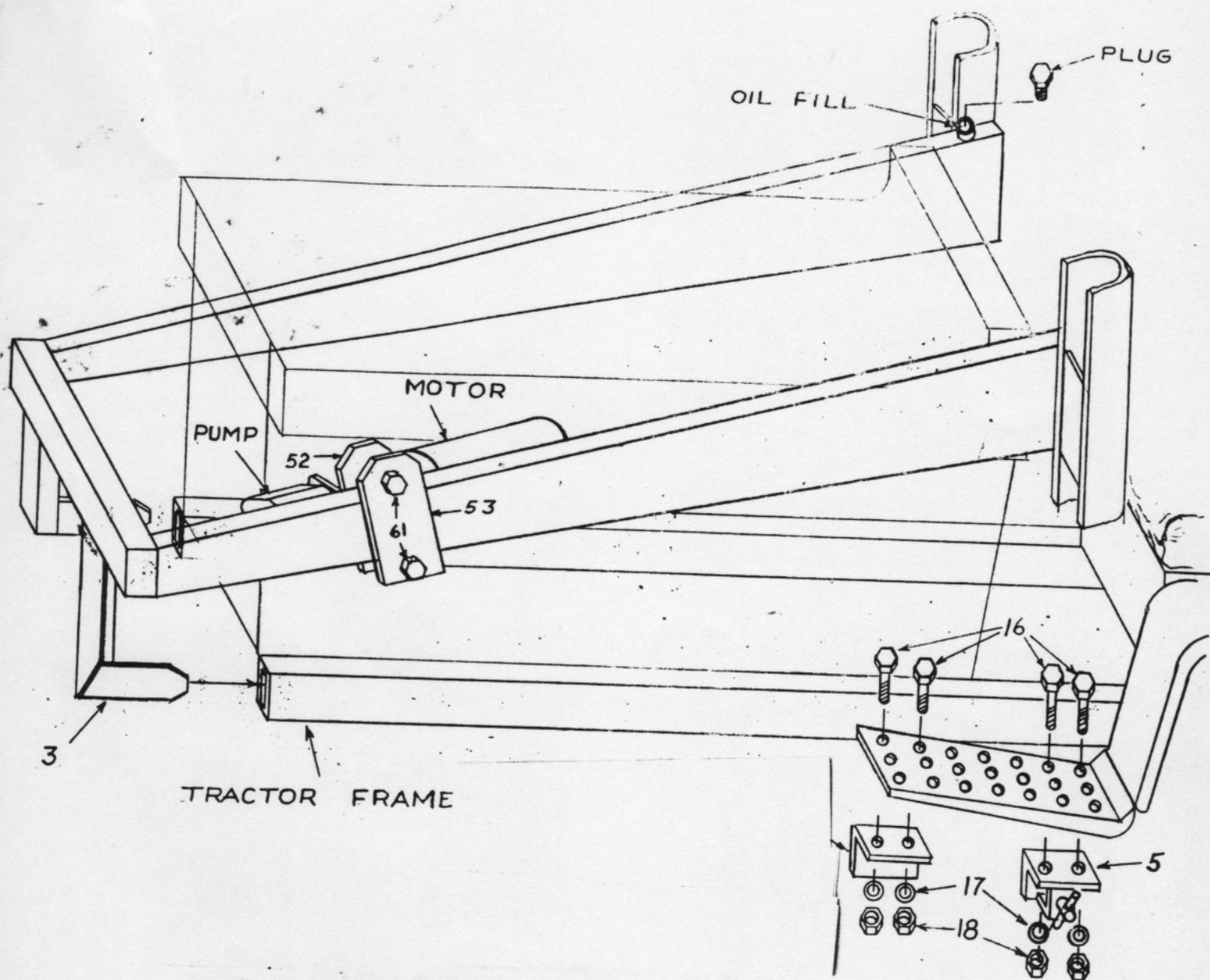


AL 40 LOADER



owners manual

MOUNTING INSTRUCTIONS FOR MODEL A1.40 LOADER

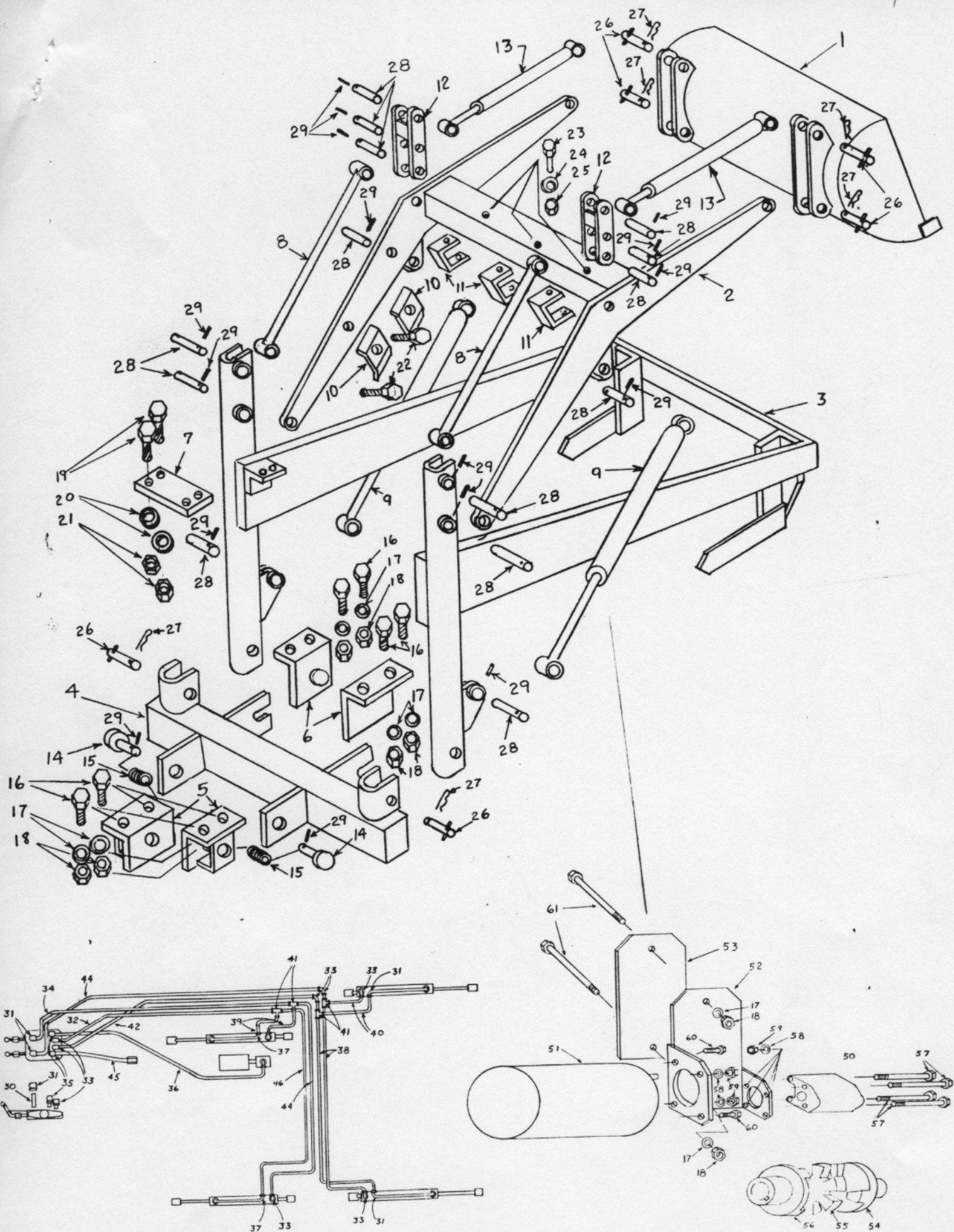


To install the Bucket Loader on 1-5 Tractor:
Remove Left Front Fender.

Attach brackets #5 and #6 to footrests as shown in drawing, then slide slots on forward part of cross member part #4 onto slot pins of brackets #6. Align holes on back side of cross member #4 with pins of quick - attach bracket #5 and snap into place.

Attach sub frame assembly #3 by sliding brackets at front of part #3 into frame at front of tractor and at the same time guide the uprights at rear of ass'y #3 into brackets on cross member #4 and secure with parts #26 and 27.

Lift capacity 500# with 240# in weight box plus 175# operator.



PARTS LIST FOR AL40 LOADER

PART NO.	DESCRIPTION	NO. REQUIRED
1	40" Material Bucket	1
2	Main Frame Assembly	1
3	Sub Frame Assembly	1
4	Cross Member	1
5	Rear Cross Member Bracket	2
6-6A	Front Cross Member Bracket	1 Left 1 Right
7	Valve Mounting Plate	1
8	Self Leveling Arms	2
9-9A	Lift Cylinders	1 Left 1 Right
10	Side Hose Clamp	2
11	Front Hose Clamp	3
12	Self Leveling Bracket	2
13	Bucket Cylinder	2
14	Mounting Bracket Pin	2
15	Mounting Bracket Spring	2
16	Cap Screws 3/8 x 1 U.S.S.	8
17	Lock Washer 3/8"	10
18	Hex Head Nut 3/8" U.S.S.	10
19	Cap Screw 1/4 x 1 1/2"	3
20	Lock Washer 1/4"	3
21	Hex Head Nut 1/4" U.S.S.	3
22	Carriage Bolt 1/4 x 2 3/4"	2
23	Stove Bolt 3/16 x 4" U.S.S.	3
24	Lockwasher 3/16"	3
25	Hex Head Nut 3/16" U.S.S.	3
26	Mounting Pin	6
27	Hair Pin Clip	6
28	Loader Assembly Pins	14
29	Expansion Pin 3/16 x 1"	14
30	Pipe Nipple 1/4 x 2"	2
31	Pipe Elbow 1/4 x 90 deg.	4
32	Hydraulic Hose 1/4 x 32"	1
33	Pipe St. El. 1/4 x 90 deg.	8
34	Hydraulic Hose 1/4 x 34"	1
35	Pipe St. El. 3/8 x 90 deg.	2
36	Hydraulic Hose 3/8 x 36"	1
37	Pipe Coupling 1/4"	2
38	Hydraulic Hose 1/4 x 38"	2
39	Hydraulic Hose 1/4 x 12"	2
40	Hydraulic Hose 1/4 x 16"	2
41	Pipe Tee 1/4"	4
42	Hydraulic Hose 1/4 x 42"	1
43	Valve	1
44	Hydraulic Hose 1/4 x 44"	2
45	Hydraulic Hose 3/8 x 19"	1
46	Hydraulic Hose 1/4 x 46"	1
50	Hydraulic Pump	1
51	Electric Motor	1
52	Motor and Pump Bracket	1
53	Bracket Plate	1
54	Coupling Body 7/16 bore	1
55	Coupling Spider	1
56	Coupling Body 7/8 bore	1
57	Hex Head Bolt 5/16" x 4 N.C.	4
58	Lockwasher 5/16"	6
59	Hex Head Nut 5/16" N.C.	4
60	Hex Head Bolt 5/16" x 1 N.C.	2
61	Hex Head Bolt 3/8" x 2 1/2 N.C.	2

OPERATORS INSTRUCTIONS

Your AL40 loader is built to rigid specifications. The hydraulic system has precision built components with double acting hydraulic cylinders. The self-contained, independent hydraulic system, uses an M.T.E. pump and Ward Hydraulic two spool valve. The valve has a float position in one spool.

Type A fluid is recommended for this system. The system requires approximately 2 gal. of fluid. Start with 1 gal. and raise and lower loader. Add more oil until loader will raise and lower smoothly. After raising and lowering under power several times, oil level should be approximately $1\frac{1}{2}$ " above bottom of reservoir when all cylinders are retracted.

All cylinders have chrome plated shafts for long life. All attachments are self leveling.

Following is a list of suggestions to help you get the most in performance from your loader.

1. For your safety, after filling the bucket, transport the load at the lowest possible level.
2. Avoid fast, sharp turns with bucket loaded or with loader raised.
3. A lifting capacity of 500 lbs. requires 240# in a rear weight box plus a 175# operator.
4. Do not lower loader without having the pump running. This will cause overflow of oil in the oil supply reservoir.
5. Do not lower load with valve in float position. This will also cause overflow of oil in the oil supply reservoir.
6. If loader raises with unsteady motion, this indicates lack of hydraulic fluid. Add sufficient fluid for smooth operation.
7. Keep all fittings, bolts, and nuts tightened.
8. Use Type A transmission fluid in the hydraulic system for best results and longer life.

GUARANTEE

E. G. & W. MANUFACTURING CO., INC. guarantees the AL40 LOADER FOR ONE YEAR AGAINST ANY DEFECTIVE MATERIAL OR WORKMANSHIP. Hydraulic valves, cylinders, pumps, and hoses carry only the manufacturer's guarantee of ninety (90) days.

Any parts returned to E. G. & W. MANUFACTURING COMPANY, INC. Eagle Grove, Iowa, prepaid within the warranty period of one year will be replaced or repaired free of charge providing operator has not been negligent and the parts have not been defaced in any way.

A KS-70 heavy duty spindle kit is recommended and available through your G. E. OPEO dealer. The Model 1-5 is already built with the heavy duty spindle installed.

INCREASE FRONT TIRE PRESSURE TO A MINIMUM OF 30 LBS.