



Electrak[®] NEWS

Garden Tractor

No. 71-14

April 9, 1971

RUSS LIGHT RECEIVES \$490 SUGGESTION AWARD

Russ, a development mechanic in Manufacturing Engineering is presented with a \$490 suggestion award by Bruce Laumeister. Russ's suggestion, the highest granted by OPEO to date, involved the combining of two assembly operations into one which resulted in a significant savings of both labor and material.

Congratulations Russ on your successful and rewarding effort.

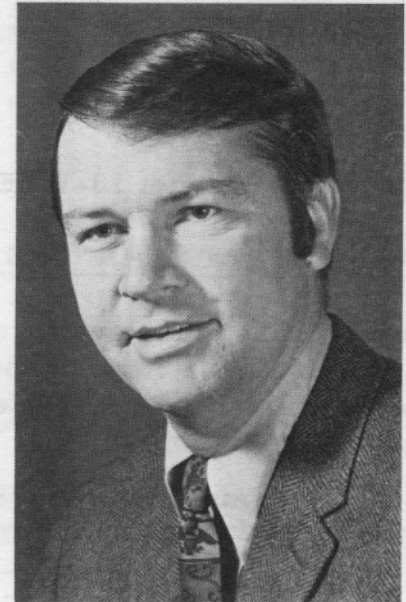


WILLIAM E. DONAHUE has been appointed Supervisor of Dealer Development and Sales Training reporting to Gene Re, Manager-Sales and Market Development Lawn and Garden Products.

A native of Pittsfield, Mass., Bill received a B.A. degree in Business Administration from the University of Mass. in 1959. He was employed by Cheseboro-Ponds, Inc. for two years and was owner/manager of a power equipment dealership and small engine distributor in Pittsfield for three years.

Bill joined GE in January 1970 as an OPEO sales representative and in his new assignment will be responsible for dealer development and evaluating and developing effective sales training techniques.

Bill, his wife and four children reside in Pittsfield, Mass.



SUGGESTION AWARDS

Doug Brown	-	\$10.00	Gerry Buczek	-	\$10.00
Lon Buchalski	-	\$10.00	Chris Calvano	-	\$10.00
Anna Oliver	-	\$10.00			



CURTIS MIMMS recently joined OPEO as a Specialist-Product Evaluation with responsibility for field test evaluation of our Elec-Trak garden tractors.

A native of New Orleans, La., Curtis received his B.S. degree in Mechanical Technology from Southern University A&M in June 1970. He comes to us from the R&D Center where he started with GE on 6/29/70.



Curtis resides in Sheridan Village, Schenectady

ELEC-TRAK GARDEN TRACTOR PUBLICITY ON LOCAL TV

Starting April 12 and continuing through May 9, local TV stations will be showing spot advertising of Elec-Trak as follows:

Channel 13-WAST	*1	Mon. -Fri.	11:00-11:30 PM	Eyewitness News
" "	1	Sat.	10:30 PM	Movie
" "	2	Mon. -Fri.	11:30-12:30 PM	The Saint
Channel 6 - WRGB	* 1	Sat.	6:00-7:00 PM	News/Weather/ Sports
" "	1	Mon. -Fri.	6:00-7:00 PM	"
" "	1	Mon. -Sun.	11:00-11:30 PM	"
" "	1	Mon. -Fri.	11:30-1:00 AM	Tonight Show
Channel 10-WTEN	* 1	Mon. -Sat.	6:30 7:30 PM	Big News

STARTING TIME CHANGES - ALL SHIFTS

Some 100 first shift employees have requested that consideration be given to moving up the starting and quitting time of the first shift to alleviate the 4:00 PM traffic problem. Since such a change will affect all shifts we are conducting a survey to determine if changes are in order.

All factory employees on all shifts (1st included) are asked to indicate their preference on the following form. Only signed forms submitted to your foreman will be valid.

I (do) (do not) favor moving up the 1st, 2nd and 3rd shift starting times to 7:15 AM, 3:35 PM, and 10:55 PM respectively.

Signed: _____

Shift: _____

We will announce results and any possible changes next week. **BE CERTAIN TO GET IN YOUR VOTE!**

*Number per week

"RIDE WITH PRIDE" QUALITY CONTROL PROGRAM COMPETITION

Area winner for March in the "Ride With Pride" competition is Electrical Assembly group with 24 points per person. The runner up is PCB Fabrication with 6 points per person. Winners are determined on most points won for good workmanship according to specific rules which have been posted on the factory bulletin boards. Points won and lost by each group for March are as follows:

<u>Area</u>		<u>Points Awarded</u>
Paint Line - 1st Shift	-	-56 Points/Person
Paint Line - 2nd Shift	-	-71 Points/Person
Paint Line - 3rd Shift	-	-69 Points/Person
1st and 2nd Shift Mower and Pack Line	-	-4 Points/Person
Tractor Repair and Pack	-	0 Points
PCB Fabrication	-	+6 Points/Person
Termination	-	-21 Points/Person
Electrical Assembly	-	+24 Points/Person
Tractor Assembly	-	-17 Points/Person
Machining 1st Shift	-	-21 Points/Person
Machining - 2nd Shift	-	-37 Points/Person
Production Support	-	-46 Points/Person
Bldg. 803	-	-19 Points/Person